



**NORMONT**



*MOTION CONTROL PRODUCTS FOR INDUSTRIAL APPLICATIONS*

[www.normont.com](http://www.normont.com)

**WHERE YOUR NEEDS CONNECT TO OUR SOLUTIONS**



NORMONT

# INNOVATIVE EXPERIENCED, WITH A GLOBAL REACH

With 30 years of proven experience and stability, Normont has the reputation for excellence and the ability to quickly turn around design engineered solutions that meet any scale requirement. Normont is nimble and responsive; with a personal touch. That's what makes Normont unique in its field.

Today we have an accumulated design, manufacturing and logistical expertise to be a reliable and stable partner who can be counted on to deliver quality products.

With manufacturing, engineering, and logistical support around the globe, we can provide seamless local assistance from the design engineering, to the on-time delivery of your gas spring.

You can find dedicated Normont technical sales engineers working hard developing products for industries as diverse as diverse as the automotive and their tier suppliers, to bus, truck and train manufacturers – fire truck builders, ambulance manufacturers – companies developing recreational vehicles, etc. The list is long – however one rule applies; No customer is too big or small, each is as important as the other.



Normont Motion Technology  
Montréal / Detroit / Mexico City

# TABLE OF CONTENTS

## TECHNICAL & DESIGN INFORMATION

How to Measure a Gas Spring ..... 4

Product Nomenclature ..... 5

When Designing a Gas Spring ..... 6

Application Design Form ..... 7

## MOTION CONTROL PRODUCTS

Standard Gas Springs ..... 9

Dampers ..... 18

Stainless Steel Gas Springs ..... 21

External Locking Gas Springs ..... 29

Tension/Pull/Traction Gas Springs ..... 36

## COMPONENTS

End Fittings ..... 40

Ball Studs ..... 41

Brackets ..... 42

## INFORMATION

Part Number Index ..... 46

Terms & Conditions ..... 51



## HOW TO MEASURE A GAS SPRING



### SIX SIMPLE PIECES OF INFORMATION IS ALL WE NEED...

- 1. EXTENDED LENGTH
- 2. STROKE LENGTH
- 3. ROD DIAMETER
- 4. TUBE DIAMETER
- 5. END FITTING TYPE (See Page 40)
- 6. FORCE

## PART NUMBERING SYSTEM

PART NUMBER EXAMPLE: NSG1700M200PC1

<u>Prod Type</u> NSG	<u>Length</u> 1700	<u>Size</u> M	<u>Force</u> 200	<u>End Fitting</u> PC1
-------------------------	-----------------------	------------------	---------------------	---------------------------

### PRODUCTS TYPE

NSG	STANDARD LIFT GAS SPRING
NSD	DAMPERS
NSSG	STAINLESS STEEL GAS SPRING
NSLG	EXTERNAL LOCKING GAS SPRING
NST	TENSION/PULL GAS SPRINGS

### LENGTH

The length is measured in inches

If there are 3 digits in the part # put a period after the 1st digit, this would be the length in inches; 750 is 7.50 inches long

If there are 4 digits in the part # put a period after the 2nd digit, this would be the length in inches; 2050 is 20.50 inches long

### AVAILABLE SIZES

<u>Size</u>	<u>Millimeters</u>	<u>Inches</u>
S	6x15	.25 x .591
M	8x18	.315 x .748
Q	8x22	.315 x .866
L	10x22	.394 x .866
R	10x28	.394 x 1.1
x	14x28	.55 x 1.1
Z	16x28	.63 x 1.1
Y	20x40	.787 x 1.57

(Size is Rod diameter x Tube diameter)

### END FITTING

For detail option see page 40

### FORCE

The force is measured in pounds

## PRODUCT NOMENCLATURE

### LIFT GAS SPRING

Most commonly found on the hatch back of a car /SUV. A lift gas spring functions in a compressed position. By compressing the rod into the tube, the nitrogen gas within the tube is also being compressed. As the space within the tube is reduced, the gas pressure rises, which leads to the storing of energy. Once actuated, the gas spring then assist with the movement of an object, such as lifting the hatch back door for a car.

### DAMPER

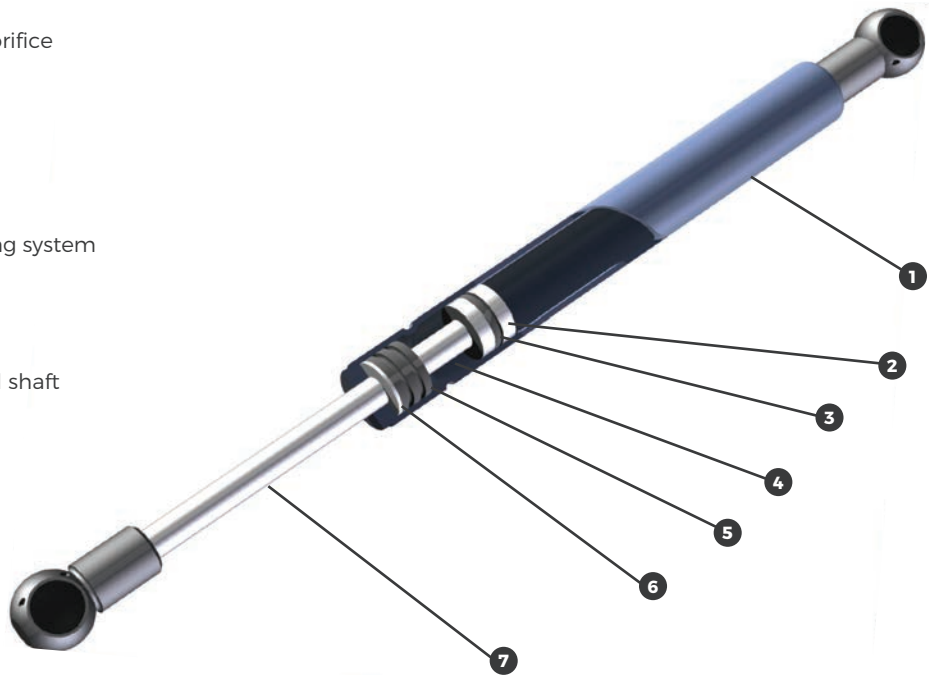
Dampers are designed to control speed & motion, as determined by the quality of hydraulic oil within the tube. Dampening can be set in either extension, compression, or both directions. A damper is commonly used in applications where a cover opens downward and controlled motion is required.

### TENSION/PULL/TRACTION

A Tension gas springs works in an opposite manner as a lift gas spring, it functions in extension. The operator "pulls" the rod from the tube, as the rod is "pulled" the nitrogen is compressed causing the gas pressure to increase, storing the energy. Once the operator releases the tension spring, the energy reacts compressing the rod back into the tube.

## THE INNER WORKINGS OF AN NSG GAS SPRING

- 1 Thick gauge steel body
- 2 Self cleaning orifice
- 3 Rubber O-ring
- 4 Hydraulic fluid
- 5 Specialty sealing system
- 6 Teflon ring
- 7 Hardened steel shaft





## TO THE DESIGN ENGINEER

### CYCLE DURABILITY DESIGN

A common concern when designing a gas spring is "cycle durability". Gas springs that are manufactured using a single lip seal system are unable to meet minimal cycle requirements, be it 30,000 to 50,000 cycles. The NSG gas spring is designed and manufactured using proprietary processes and a unique seal system that routinely surpasses 2 million vibration cycle durability requirements. This extraordinary performance can, depending upon the application, allow Normont to offer a 5 year warranty. Standard warranty 2 years.

### ASSISTANCE

We recognize that designing a gas spring is not an everyday function, to help in the process we've created a simple design sheet to make your challenge easy. The design sheet is found on page 7 and can be downloaded from our website. The basic information we require to process your design request is the center of gravity, the handle position, the opening angle, and the weight of the door. You can also send us a drawing or a sample and let us determine the correct gas spring size, it's pressure, and the mounting positions.

### CUSTOMIZATION/ APPLICATION SPECIFIC GAS SPRINGS

Normont can offer custom gas springs & dampers. We supply gas springs with a length up to 7 feet, a force up 1000 pounds, with a variety of end connections and brackets. Stainless steel & locking gas springs, along with adjustable force gas springs are available. Prefer to work in metric, not a problem, a metric program is available.

### COMMON APPLICATIONS



#### TRANSPORTATION

- Bus
- Truck
- Marine
- Aerospace
- Emergency Vehicles
- Recreational Vehicles

#### OFF HIGHWAY

- Farm Equipment
- Riding Mower
- Construction Equipment

#### ELECTRONIC

- Bank Machine
- Copier
- Computer
- Commercial Printer

#### CONSUMER

- Tool Box
- Tanning Bed
- Washer/Dryer
- Tonneau Cover
- Dumpster

Application Design Form

Company: \_\_\_\_\_ Date: \_\_\_\_\_

Name : \_\_\_\_\_ Position: \_\_\_\_\_

Address: \_\_\_\_\_ Telephone: \_\_\_\_\_

\_\_\_\_\_ Email: \_\_\_\_\_

Annual Usage: \_\_\_\_\_ Due Date: \_\_\_\_\_

Sample(s) Required: \_\_\_\_\_ Quantity: \_\_\_\_\_

Description of the Application (environment, no. of cycles, etc.): \_\_\_\_\_

\_\_\_\_\_  
 \_\_\_\_\_  
 \_\_\_\_\_

Mounting Restrictions: \_\_\_\_\_

Design Data		X(in.)	Y(in.)
Center of Hinge Point		0.00	0.00
Center of Gravity:			
Door Closed	* A		
Spring Mounting Points:			
To Door (closed)	B		
To Base	C		
Handle Position (closed)*D			
Opening Angle	* E		Degrees
Weight of Door	*		lbs.
Handle Force Desired:			
Required to Open Door			lbs.
Required to Close Door			lbs.
Door Dimensions:			
Width			in.
Depth			in.
Thickness			in.

\* Required Data

# STANDARD LIFT GAS SPRINGS

**MINI  
SERIES**



Page 9

**6 X 15  
SERIES**



Page 10-11

**8 X 18  
SERIES**



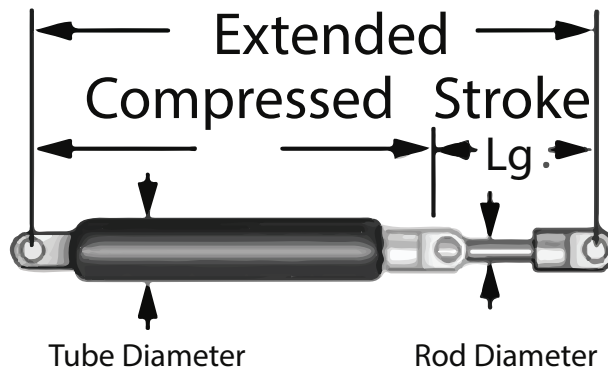
Page 12-14

**10 X 22  
14 X 28  
16 X 28  
SERIES**

Page 15-16



STANDARD GAS SPRINGS-MINI (4 X 12)



All lengths are measured with end fittings attached. Fittings are only included when specified in the 'End Fitting' column.

Part Number	Rod diam.	Tube diam	Stroke Length	Extended Length	P1 Force (lbs)
NSM435A5E	0.16	0.47	1.2	4.35	5
NSM435A10E	0.16	0.47	1.2	4.35	10
NSM435A15E	0.16	0.47	1.2	4.35	15
NSM435A20E	0.16	0.47	1.2	4.35	20
NSM435A25E	0.16	0.47	1.2	4.35	25
NSM510A5E	0.16	0.47	1.57	5.10	5
NSM510A10E	0.16	0.47	1.57	5.10	10
NSM510A15E	0.16	0.47	1.57	5.10	15
NSM510A20E	0.16	0.47	1.57	5.10	20
NSM510A25E	0.16	0.47	1.57	5.10	25
NSM630A5E	0.16	0.47	2.17	6.30	5
NSM630A10E	0.16	0.47	2.17	6.30	10
NSM630A15E	0.16	0.47	2.17	6.30	15
NSM630A20E	0.16	0.47	2.17	6.30	20
NSM630A25E	0.16	0.47	2.17	6.30	25
NSM710A5E	0.16	0.47	2.56	7.10	5
NSM710A10E	0.16	0.47	2.56	7.10	10
NSM710A15E	0.16	0.47	2.56	7.10	15
NSM710A20E	0.16	0.47	2.56	7.10	20
NSM710A25E	0.16	0.47	2.56	7.10	25
NSM825A5E	0.16	0.47	3.15	8.25	5
NSM825A10E	0.16	0.47	3.15	8.25	10
NSM825A15E	0.16	0.47	3.15	8.25	15
NSM825A20E	0.16	0.47	3.15	8.25	20
NSM825A25E	0.16	0.47	3.15	8.25	25
NSM905A5E	0.16	0.47	3.55	9.05	5
NSM905A10E	0.16	0.47	3.55	9.05	10
NSM905A15E	0.16	0.47	3.55	9.05	15
NSM905A20E	0.16	0.47	3.55	9.05	20
NSM905A25E	0.16	0.47	3.55	9.05	25



## STANDARD GAS SPRING (6x15)



All lengths are measured with end fittings attached. Fittings are only included when specified in the 'End Fitting' column.

Part Number	Rod diam.	Tube diam	Stroke Length	Extended Length	P1 Force (lbs)
NSG750S20PC1	0.25	0.591	2	7.5	20
NSG750S20MT1	0.25	0.591	2	7.5	20
NSG750S30PC1	0.25	0.591	2	7.5	30
NSG750S40MT1	0.25	0.591	2	7.5	40
NSG750S40PC1	0.25	0.591	2	7.5	40
NSG750S60MT1	0.25	0.591	2	7.5	60
NSG750S60PC1	0.25	0.591	2	7.5	60
NSG750S80MT1	0.25	0.591	2	7.5	80
NSG750S80PC1	0.25	0.591	2	7.5	80
NSG960S20MT1	0.25	0.591	3.15	9.6	20
NSG960S20PC1	0.25	0.591	3.15	9.6	20
NSG960S30PC1	0.25	0.591	3.15	9.6	30
NSG960S40MT1	0.25	0.591	3.15	9.6	40
NSG960S40PC1	0.25	0.591	3.15	9.6	40
NSG960S50PC1	0.25	0.591	3.15	9.6	50
NSG960S60PC1	0.25	0.591	3.15	9.6	60
NSG960S60MT1	0.25	0.591	3.15	9.6	60
NSG960S80PC1	0.25	0.591	3.15	9.6	80
NSG960S80MT1	0.25	0.591	3.15	9.6	80
NSG1000S20PC1	0.25	0.591	3	10	20
NSG1000S20MT1	0.25	0.591	3	10	20
NSG1000S30PC1	0.25	0.591	3	10	30
NSG1000S40PC1	0.25	0.591	3	10	40
NSG1000S40MT1	0.25	0.591	3	10	40
NSG1000S60PC1	0.25	0.591	3	10	60
NSG1000S60MT1	0.25	0.591	3	10	60
NSG1000S80PC1	0.25	0.591	3	10	80
NSG1000S80MT1	0.25	0.591	3	10	80
NGS1200S20PC1	0.25	0.591	3.5	12	20
NGS1200S20MT1	0.25	0.591	3.5	12	20
NGS1200S30PC1	0.25	0.591	3.5	12	30
NGS1200S30MT1	0.25	0.591	3.5	12	30
NGS1200S40PC1	0.25	0.591	3.5	12	40
NGS1200S40MT1	0.25	0.591	3.5	12	40
NGS1200S60PC1	0.25	0.591	3.5	12	60
NGS1200S60MT1	0.25	0.591	3.5	12	60
NGS1200S80PC1	0.25	0.591	3.5	12	80
NGS1200S80MT1	0.25	0.591	3.5	12	80
NSG1450S20PC1	0.25	0.591	5	14.5	20
NSG1450S20MT1	0.25	0.591	5	14.5	20
NSG1450S30PC1	0.25	0.591	5	14.5	30
NSG1450S30MT1	0.25	0.591	5	14.5	30
NSG1450S40PC1	0.25	0.591	5	14.5	40
NSG1450S40MT1	0.25	0.591	5	14.5	40
NSG1450S60PC1	0.25	0.591	5	14.5	60
NSG1450S60MT1	0.25	0.591	5	14.5	60
NSG1450S80PC1	0.25	0.591	5	14.5	80
NSG1450S80MT1	0.25	0.591	5	14.5	80

GAS SPRINGS & DAMPERS

## STANDARD GAS SPRING (6x15)



All lengths are measured with end fittings attached. Fittings are only included when specified in the 'End Fitting' column.

Part Number	Rod diam.	Tube diam	Stroke Length	Extended Length	P1 Force (lbs)
NSG1500S20PC1	0.25	0.591	5.5	15	20
NSG1500S20MT1	0.25	0.591	5.5	15	20
NSG1500S30PC1	0.25	0.591	5.5	15	30
NSG1500S30MT1	0.25	0.591	5.5	15	30
NSG1500S40PC1	0.25	0.591	5.5	15	40
NSG1500S40MT1	0.25	0.591	5.5	15	40
NSG1500S60PC1	0.25	0.591	5.5	15	60
NSG1500S60MT1	0.25	0.591	5.5	15	60
NSG1500S80PC1	0.25	0.591	5.5	15	80
NSG1500S80MT1	0.25	0.591	5.5	15	80
NSG1700S30PC1	0.25	0.591	6.75	17	30
NSG1700S40PC1	0.25	0.591	6.75	17	40
NSG1700S60PC1	0.25	0.591	6.75	17	60
NSG1700S80PC1	0.25	0.591	6.75	17	80
NSG1719S20PC1	0.25	0.591	6.18	17.19	20
NSG1719S20MT1	0.25	0.591	6.18	17.19	20
NSG1719S30PC1	0.25	0.591	6.18	17.19	30
NSG1719S30MT1	0.25	0.591	6.18	17.19	30
NSG1719S40PC1	0.25	0.591	6.18	17.19	40
NSG1719S40MT1	0.25	0.591	6.18	17.19	40
NSG1719S60PC1	0.25	0.591	6.18	17.19	60
NSG1719S60MT1	0.25	0.591	6.18	17.19	60
NSG1719S80PC1	0.25	0.591	6.18	17.19	80
NSG1719S80MT1	0.25	0.591	6.18	17.19	80
NSG1968S20PC1	0.25	0.591	8	19.68	20
NSG1968S20MT1	0.25	0.591	8	19.68	20
NSG1968S30PC1	0.25	0.591	8	19.68	30
NSG1968S30MT1	0.25	0.591	8	19.68	30
NSG1968S40PC1	0.25	0.591	8	19.68	40
NSG1968S40MT1	0.25	0.591	8	19.68	40
NSG1968S50PC1	0.25	0.591	8	19.68	50
NSG1968S50MT1	0.25	0.591	8	19.68	50
NSG1968S60PC1	0.25	0.591	8	19.68	60
NSG1968S60MT1	0.25	0.591	8	19.68	60
NSG1968S70PC1	0.25	0.591	8	19.68	70
NSG1968S70MT1	0.25	0.591	8	19.68	70
NSG1968S80PC1	0.25	0.591	8	19.68	80
NSG1968S80MT1	0.25	0.591	8	19.68	80
NSG2000S20PC1	0.25	0.591	8.12	20	20
NSG2000S20MT1	0.25	0.591	8.12	20	20
NSG2000S30PC1	0.25	0.591	8.12	20	30
NSG2000S30MT1	0.25	0.591	8.12	20	30
NSG2000S40PC1	0.25	0.591	8.12	20	40
NSG2000S40MT1	0.25	0.591	8.12	20	40
NSG2000S60PC1	0.25	0.591	8.12	20	60
NSG2000S60MT1	0.25	0.591	8.12	20	60
NSG2000S80PC1	0.25	0.591	8.12	20	80
NSG2000S80MT1	0.25	0.591	8.12	20	80



## STANDARD GAS SPRING (8x18)



All lengths are measured with end fittings attached. Fittings are only included when specified in the 'End Fitting' column.

Part Number	Rod diam.	Tube diam	Stroke Length	Extended Length	P1 Force (lbs)
NSG750M90MT1	0.315	0.748	2	7.5	90
NSG750M100PC1	0.315	0.748	2	7.5	100
NSG750M100MT1	0.315	0.748	2	7.5	100
NSG750M120PC1	0.315	0.748	2	7.5	120
NSG750M120MT1	0.315	0.748	2	7.5	120
NSG960M20PC1	0.315	0.748	3.25	9.6	20
NSG960M20MT1	0.315	0.748	3.25	9.6	20
NSG960M30PC1	0.315	0.748	3.25	9.6	30
NSG960M30MT1	0.315	0.748	3.25	9.6	30
NSG960M40PC1	0.315	0.748	3.25	9.6	40
NSG960M40MT1	0.315	0.748	3.25	9.6	40
NSG960M60PC1	0.315	0.748	3.25	9.6	60
NSG960M60MT1	0.315	0.748	3.25	9.6	60
NSG960M80PC1	0.315	0.748	3.25	9.6	80
NSG960M80MT1	0.315	0.748	3.25	9.6	80
NSG960M90PC1	0.315	0.748	3.25	9.6	90
NSG960M90MT1	0.315	0.748	3.25	9.6	90
NSG960M100PC1	0.315	0.748	3.25	9.6	100
NSG960M100MT1	0.315	0.748	3.25	9.6	100
NSG960M120PC1	0.315	0.748	3.25	9.6	120
NSG960M120MT1	0.315	0.748	3.25	9.6	120
NSG1000M90PC1	0.315	0.748	3	10	90
NSG1000M90MT1	0.315	0.748	3	10	90
NSG1000M100PC1	0.315	0.748	3	10	100
NSG1000M100MT1	0.315	0.748	3	10	100
NSG1000M120PC1	0.315	0.748	3	10	120
NSG1000M120MT1	0.315	0.748	3	10	120
NSG1200M20MT1	0.315	0.748	3.5	12	20
NSG1200M20PC1	0.315	0.748	3.5	12	20
NSG1200M30MT1	0.315	0.748	3.5	12	30
NSG1200M30PC1	0.315	0.748	3.5	12	30
NSG1200M40MT1	0.315	0.748	3.5	12	40
NSG1200M40PC1	0.315	0.748	3.5	12	40
NSG1200M60MT1	0.315	0.748	3.5	12	60
NSG1200M60PC1	0.315	0.748	3.5	12	60
NSG1200M80PC1	0.315	0.748	3.5	12	80
NSG1200M90PC1	0.315	0.748	3.5	12	90
NSG1200M90MT1	0.315	0.748	3.5	12	90
NSG1200M120PC1	0.315	0.748	3.5	12	120
NSG1200M120MT1	0.315	0.748	3.5	12	120
NSG1221M20PC1	0.315	0.748	4	12.21	20
NSG1221M20MT1	0.315	0.748	4	12.21	20
NSG1221M30PC1	0.315	0.748	4	12.21	30
NSG1221M30MT1	0.315	0.748	4	12.21	30
NSG1221M40PC1	0.315	0.748	4	12.21	40
NSG1221M40MT1	0.315	0.748	4	12.21	40
NSG1221M60PC1	0.315	0.748	4	12.21	60
NSG1221M60MT1	0.315	0.748	4	12.21	60
NSG1221M80PC1	0.315	0.748	4	12.21	80
NSG1221M80MT1	0.315	0.748	4	12.21	80
NSG1221M100PC1	0.315	0.748	4	12.21	100
NSG1221M100MT1	0.315	0.748	4	12.21	100
NSG1221M120PC1	0.315	0.748	4	12.21	120
NSG1221M120MT1	0.315	0.748	4	12.21	120
NSG1221M150PC1	0.315	0.748	4	12.21	150
NSG1221M150MT1	0.315	0.748	4	12.21	150

## STANDARD GAS SPRING (8x18)



All lengths are measured with end fittings attached. Fittings are only included when specified in the 'End Fitting' column.

Part Number	Rod diam.	Tube diam	Stroke Length	Extended Length	P1 Force (lbs)
NSG1450M20MT1	0.315	0.748	5	14.5	20
NSG1450M20PC1	0.315	0.748	5	14.5	20
NSG1450M30MT1	0.315	0.748	5	14.5	30
NSG1450M30PC1	0.315	0.748	5	14.5	30
NSG1450M40MT1	0.315	0.748	5	14.5	40
NSG1450M40PC1	0.315	0.748	5	14.5	40
NSG1450M60MT1	0.315	0.748	5	14.5	60
NSG1450M60PC1	0.315	0.748	5	14.5	60
NSG1450M75MT1	0.315	0.748	5	14.5	75
NSG1450M75PC1	0.315	0.748	5	14.5	75
NSG1450M90MT1	0.315	0.748	5	14.5	90
NSG1450M90PC1	0.315	0.748	5	14.5	90
NSG1450M120MT1	0.315	0.748	5	14.5	120
NSG1450M120PC1	0.315	0.748	5	14.5	120
NSG1450M150PC1	0.315	0.748	5	14.5	150
NSG1450M150MT1	0.315	0.748	5	14.5	150
NSG1527M20PC1	0.315	0.748	5.5	15.27	20
NSG1527M20MT1	0.315	0.748	5.5	15.27	20
NSG1527M30PC1	0.315	0.748	5.5	15.27	30
NSG1527M30MT1	0.315	0.748	5.5	15.27	30
NSG1527M50PC1	0.315	0.748	5.5	15.27	50
NSG1527M50MT1	0.315	0.748	5.5	15.27	50
NSG1527M75PC1	0.315	0.748	5.5	15.27	75
NSG1527M75MT1	0.315	0.748	5.5	15.27	75
NSG1527M90PC1	0.315	0.748	5.5	15.27	90
NSG1527M90MT1	0.315	0.748	5.5	15.27	90
NSG1527M120PC1	0.315	0.748	5.5	15.27	120
NSG1527M120MT1	0.315	0.748	5.5	15.27	120
NSG1527M150PC1	0.315	0.748	5.5	15.27	150
NSG1527M150MT1	0.315	0.748	5.5	15.27	150
NSG1700M20MT1	0.315	0.748	6	17	20
NSG1700M20PC1	0.315	0.748	6	17	20
NSG1700M30MT1	0.315	0.748	6	17	30
NSG1700M30PC1	0.315	0.748	6	17	30
NSG1700M40PC1	0.315	0.748	6	17	40
NSG1700M40MT1	0.315	0.748	6	17	40
NSG1700M60MT1	0.315	0.748	6	17	60
NSG1700M60PC1	0.315	0.748	6	17	60
NSG1700M75MT1	0.315	0.748	6	17	75
NSG1700M75PC1	0.315	0.748	6	17	75
NSG1700M90MT1	0.315	0.748	6	17	90
NSG1700M90PC1	0.315	0.748	6	17	90
NSG1700M120MT1	0.315	0.748	6	17	120
NSG1700M120PC1	0.315	0.748	6	17	120
NSG1700M150MT1	0.315	0.748	6	17	150
NSG1700M150PC1	0.315	0.748	6	17	150

GAS SPRINGS & DAMPERS



# STANDARD GAS SPRING (8x18)



All lengths are measured with end fittings attached. Fittings are only included when specified in the 'End Fitting' column.

Part Number	Rod diam.	Tube diam	Stroke Length	Extended Length	P1 Force (lbs)
NSG1850M20MT1	0.315	0.748	7.25	18.5	20
NSG1850M20PC1	0.315	0.748	7.25	18.5	20
NSG1850M30MT1	0.315	0.748	7.25	18.5	30
NSG1850M30PC1	0.315	0.748	7.25	18.5	30
NSG1850M50MT1	0.315	0.748	7.25	18.5	50
NSG1850M50PC1	0.315	0.748	7.25	18.5	50
NSG1850M60MT1	0.315	0.748	7.25	18.5	60
NSG1850M60PC1	0.315	0.748	7.25	18.5	60
NSG1850M75MT1	0.315	0.748	7.25	18.5	75
NSG1850M75PC1	0.315	0.748	7.25	18.5	75
NSG1850M90MT1	0.315	0.748	7.25	18.5	90
NSG1850M90PC1	0.315	0.748	7.25	18.5	90
NSG1850M120MT1	0.315	0.748	7.25	18.5	120
NSG1850M120PC1	0.315	0.748	7.25	18.5	120
NSG1850M150MT1	0.315	0.748	7.25	18.5	150
NSG1850M150PC1	0.315	0.748	7.25	18.5	150
NSG1963M20MT1	0.315	0.748	7	19.63	20
NSG1963M20PC1	0.315	0.748	7	19.63	20
NSG1963M30MT1	0.315	0.748	7	19.63	30
NSG1963M30PC1	0.315	0.748	7	19.63	30
NSG1963M40MT1	0.315	0.748	7	19.63	40
NSG1963M40PC1	0.315	0.748	7	19.63	40
NSG1963M50MT1	0.315	0.748	7	19.63	50
NSG1963M60MT1	0.315	0.748	7	19.63	60
NSG1963M60PC1	0.315	0.748	7	19.63	60
NSG1963M75MT1	0.315	0.748	7	19.63	75
NSG1963M90MT1	0.315	0.748	7	19.63	90
NSG1963M90PC1	0.315	0.748	7	19.63	90
NSG1963M120MT1	0.315	0.748	7	19.63	120
NSG1963M120PC1	0.315	0.748	7	19.63	120
NSG1963M150MT1	0.315	0.748	7	19.63	150
NSG1963M150PC1	0.315	0.748	7	19.63	150
NSG2000M20PC1	0.315	0.748	8	20	20
NSG2000M20MT1	0.315	0.748	8	20	20
NSG2000M30PC1	0.315	0.748	8	20	30
NSG2000M40MT1	0.315	0.748	8	20	40
NSG2000M40PC1	0.315	0.748	8	20	40
NSG2000M60MT1	0.315	0.748	8	20	60
NSG2000M60PC1	0.315	0.748	8	20	60
NSG2000M90PC1	0.315	0.748	8	20	90
NSG2000M90MT1	0.315	0.748	8	20	90
NSG2000M120PC1	0.315	0.748	8	20	120
NSG2000M120MT1	0.315	0.748	8	20	120
NSG2000M150PC1	0.315	0.748	8	20	150
NSG2000M150MT1	0.315	0.748	8	20	150
NSG2303M30PC1	0.315	0.748	8.5	23.03	30
NSG2303M30MT1	0.315	0.748	8.5	23.03	30
NSG2303M60PC1	0.315	0.748	8.5	23.03	60
NSG2303M60MT1	0.315	0.748	8.5	23.03	60
NSG2303M90PC1	0.315	0.748	8.5	23.03	90
NSG2303M90MT1	0.315	0.748	8.5	23.03	90
NSG2303M120PC1	0.315	0.748	8.5	23.03	120
NSG2303M120MT1	0.315	0.748	8.5	23.03	120
NSG2303M150PC1	0.315	0.748	8.5	23.03	150
NSG2303M150MT1	0.315	0.748	8.5	23.03	150

## STANDARD GAS SPRING (10x22)



All lengths are measured with end fittings attached. Fittings are only included when specified in the 'End Fitting' column.

Part Number	Rod diam.	Tube diam	Stroke Length	Extended Length	P1 Force (lbs)	Thread
NSG1825L50MT2	0.394	0.866	7.36	18.25	50	M8
NSG1825L75MT2	0.394	0.866	7.36	18.25	75	M8
NSG1825L100MT2	0.394	0.866	7.36	18.25	100	M8
NSG1825L125MT2	0.394	0.866	7.36	18.25	125	M8
NSG1825L150MT2	0.394	0.866	7.36	18.25	150	M8
NSG1825L175MT2	0.394	0.866	7.36	18.25	175	M8
NSG1825L200MT2	0.394	0.866	7.36	18.25	200	M8
NSG1825L225MT2	0.394	0.866	7.36	18.25	225	M8
NSG1825L250MT2	0.394	0.866	7.36	18.25	250	M8
NSG2050L50MT2	0.394	0.866	7.75	20.5	50	M8
NSG2050L75MT2	0.394	0.866	7.75	20.5	75	M8
NSG2050L100MT2	0.394	0.866	7.75	20.5	100	M8
NSG2050L125MT2	0.394	0.866	7.75	20.5	125	M8
NSG2050L150MT2	0.394	0.866	7.75	20.5	150	M8
NSG2050L175MT2	0.394	0.866	7.75	20.5	175	M8
NSG2050L200MT2	0.394	0.866	7.75	20.5	200	M8
NSG2050L225MT2	0.394	0.866	7.75	20.5	225	M8
NSG2050L250MT2	0.394	0.866	7.75	20.5	250	M8
NSG2122L125MT2	0.394	0.866	8.44	21.22	125	M8
NSG2122L150MT2	0.394	0.866	8.44	21.22	150	M8
NSG2122L200MT2	0.394	0.866	8.44	21.22	200	M8
NSG2122L250MT2	0.394	0.866	8.44	21.22	250	M8
NSG2550L50MT2	0.394	0.866	11	25.5	50	M8
NSG2550L75MT2	0.394	0.866	11	25.5	75	M8
NSG2550L100MT2	0.394	0.866	11	25.5	100	M8
NSG2550L125MT2	0.394	0.866	11	25.5	125	M8
NSG2550L150MT2	0.394	0.866	11	25.5	150	M8
NSG2550L175MT2	0.394	0.866	11	25.5	175	M8
NSG2550L200MT2	0.394	0.866	11	25.5	200	M8
NSG2550L225MT2	0.394	0.866	11	25.5	225	M8
NSG2550L250MT2	0.394	0.866	11	25.5	250	M8
NSG2780L75MT2	0.394	0.866	10	27.8	75	M8
NSG2780L100MT2	0.394	0.866	10	27.8	100	M8
NSG2780L125MT2	0.394	0.866	10	27.8	125	M8
NSG2780L150MT2	0.394	0.866	10	27.8	150	M8
NSG2780L200MT2	0.394	0.866	10	27.8	200	M8
NSG2780L250MT2	0.394	0.866	10	27.8	250	M8
NSG3550L50MT2	0.394	0.866	15	35.5	50	M8
NSG3550L75MT2	0.394	0.866	15	35.5	75	M8
NSG3550L100MT2	0.394	0.866	15	35.5	100	M8
NSG3550L125MT2	0.394	0.866	15	35.5	125	M8
NSG3550L150MT2	0.394	0.866	15	35.5	150	M8
NSG3550L175MT2	0.394	0.866	15	35.5	175	M8
NSG3550L200MT2	0.394	0.866	15	35.5	200	M8
NSG3550L225MT2	0.394	0.866	15	35.5	225	M8
NSG3550L250MT2	0.394	0.866	15	35.5	250	M8



### STANDARD GAS SPRING (14x18, 16x28)



All lengths are measured with end fittings attached. Fittings are only included when specified in the 'End Fitting' column.

Part Number	Rod diam.	Tube diam	Stroke Length	Extended Length	P1 Force (lbs)	Thread
NSG2550X250	0.55	1.1	10.6	25.5	250	M10
NSG2550X300	0.55	1.1	10.6	25.5	300	M10
NSG2550X350	0.55	1.1	10.6	25.5	350	M10
NSG3550X250	0.55	1.1	15	35.5	250	M10
NSG3550X300	0.55	1.1	15	35.5	300	M10
NSG3550X350	0.55	1.1	15	35.5	350	M10
NSG4921X250	0.55	1.1	21.65	49.21	250	M10
NSG4921X300	0.55	1.1	21.65	49.21	300	M10
NSG4921X350	0.55	1.1	21.65	49.21	350	M10
NSG5900Z250	0.63	1.1	23.62	59	250	M10
NSG5900Z300	0.63	1.1	23.62	59	300	M10
NSG5900Z350	0.63	1.1	23.62	59	350	M10



# DAMPERS

6 X 15  
SERIES



Page 18

8 X 18  
SERIES



Page 19



## DAMPER (6X15)



All lengths are measured with end fittings attached. Fittings are only included when specified in the 'End Fitting' column.

Compression Dampers control the speed while the rod is being compressed into the tube

Extension Dampers control the speed while the rod is being pulled out of the tube

### Compression Dampers

Part Number	Rod diam.	Tube diam	Stroke Length	Extended Length	Dampening
NSDC650SL	0.25	0.591	2	6.5	LIGHT
NSDC650SML	0.25	0.591	2	6.5	MED LIGHT
NSDC650SM	0.25	0.591	2	6.5	MEDIUM
NSDC650SMH	0.25	0.591	2	6.5	MED HEAVY
NSDC650SH	0.25	0.591	2	6.5	HEAVY
NSDC865SL	0.25	0.591	3	8.65	LIGHT
NSDC865SML	0.25	0.591	3	8.65	MED LIGHT
NSDC865SM	0.25	0.591	3	8.65	MEDIUM
NSDC865SMH	0.25	0.591	2	8.65	MED HEAVY
NSDC865SH	0.25	0.591	3	8.65	HEAVY
NSDC1110SL	0.25	0.591	4	11.1	LIGHT
NSDC1110SML	0.25	0.591	4	11.1	MED LIGHT
NSDC1110SM	0.25	0.591	4	11.1	MEDIUM
NSDC1110SMH	0.25	0.591	4	11.1	MED HEAVY
NSDC1110SH	0.25	0.591	4	11.1	HEAVY
NSDC1360SL	0.25	0.591	5	13.6	LIGHT
NSDC1360SML	0.25	0.591	5	13.6	MED LIGHT
NSDC1360SM	0.25	0.591	5	13.6	MEDIUM
NSDC1360SMH	0.25	0.591	5	13.6	MED HEAVY
NSDC1360SH	0.25	0.591	5	13.6	HEAVY

### Extension Dampers

Part Number	Rod diam.	Tube diam	Stroke Length	Extended Length	Dampening
NSDE650SL	0.25	0.591	2	6.5	LIGHT
NSDE650SML	0.25	0.591	2	6.5	MED LIGHT
NSDE650SM	0.25	0.591	2	6.5	MEDIUM
NSDE650SMH	0.25	0.591	2	6.5	MED HEAVY
NSDE650SH	0.25	0.591	2	6.5	HEAVY
NSDE865SL	0.25	0.591	3	8.65	LIGHT
NSDE865SML	0.25	0.591	3	8.65	MED LIGHT
NSDE865SM	0.25	0.591	3	8.65	MEDIUM
NSDE865SMH	0.25	0.591	2	8.65	MED HEAVY
NSDE865SH	0.25	0.591	3	8.65	HEAVY
NSDE1110SL	0.25	0.591	4	11.1	LIGHT
NSDE1110SML	0.25	0.591	4	11.1	MED LIGHT
NSDE1110SM	0.25	0.591	4	11.1	MEDIUM
NSDE1110SMH	0.25	0.591	4	11.1	MED HEAVY
NSDE1110SH	0.25	0.591	4	11.1	HEAVY
NSDE1360SL	0.25	0.591	5	13.6	LIGHT
NSDE1360SML	0.25	0.591	5	13.6	MED LIGHT
NSDE1360SM	0.25	0.591	5	13.6	MEDIUM
NSDE1360SMH	0.25	0.591	5	13.6	MED HEAVY
NSDE1360SH	0.25	0.591	5	13.6	HEAVY

## DAMPER (8X18)



All lengths are measured with end fittings attached. Fittings are only included when specified in the 'End Fitting' column.

Compression Dampers control the speed while the rod is being compressed into the tube

Extension Dampers control the speed while the rod is being pulled out of the tube

### Compression Dampers

Part Number	Prod #	Rod diam.	Tube diam	Stroke Length	Extended Length
NSDC1085ML	0.315	0.748	4	10.85	LIGHT
NSDC1085MML	0.315	0.748	4	10.85	MED LIGHT
NSDC1085MM	0.315	0.748	4	10.85	MEDIUM
NSDC1085MMH	0.315	0.748	4	10.85	MED HEAVY
NSDC1085MH	0.315	0.748	4	10.85	HEAVY
NSDC1310ML	0.315	0.748	5	13.1	LIGHT
NSDC1310MML	0.315	0.748	5	13.1	MED LIGHT
NSDC1310MM	0.315	0.748	5	13.1	MEDIUM
NSDC1310MMH	0.315	0.748	5	13.1	MED HEAVY
NSDC1310MH	0.315	0.748	5	13.1	HEAVY
NSDC1560ML	0.315	0.748	6	15.6	LIGHT
NSDC1560MML	0.315	0.748	6	15.6	MED LIGHT
NSDC1560MM	0.315	0.748	6	15.6	MEDIUM
NSDC1560MMH	0.315	0.748	6	15.6	MED HEAVY
NSDC1560MH	0.315	0.748	6	15.6	HEAVY
NSDC1825ML	0.315	0.748	7	18.25	LIGHT
NSDC1825MML	0.315	0.748	7	18.25	MED LIGHT
NSDC1825MM	0.315	0.748	7	18.25	MEDIUM
NSDC1825MMH	0.315	0.748	7	18.25	MED HEAVY
NSDC1825MH	0.315	0.748	7	18.25	HEAVY

### Extension Dampers

Part Number	Prod #	Rod diam.	Tube diam	Stroke Length	Extended Length
NSDE1085ML	0.315	0.748	4	10.85	LIGHT
NSDE1085MML	0.315	0.748	4	10.85	MED LIGHT
NSDE1085MM	0.315	0.748	4	10.85	MEDIUM
NSDE1085MMH	0.315	0.748	4	10.85	MED HEAVY
NSDE1085MH	0.315	0.748	4	10.85	HEAVY
NSDE1310ML	0.315	0.748	5	13.1	LIGHT
NSDE1310MML	0.315	0.748	5	13.1	MED LIGHT
NSDE1310MM	0.315	0.748	5	13.1	MEDIUM
NSDE1310MMH	0.315	0.748	5	13.1	MED HEAVY
NSDE1310MH	0.315	0.748	5	13.1	HEAVY
NSDE1560ML	0.315	0.748	6	15.6	LIGHT
NSDE1560MML	0.315	0.748	6	15.6	MED LIGHT
NSDE1560MM	0.315	0.748	6	15.6	MEDIUM
NSDE1560MMH	0.315	0.748	6	15.6	MED HEAVY
NSDE1560MH	0.315	0.748	6	15.6	HEAVY
NSDE1825ML	0.315	0.748	7	18.25	LIGHT
NSDE1825MML	0.315	0.748	7	18.25	MED LIGHT
NSDE1825MM	0.315	0.748	7	18.25	MEDIUM
NSDE1825MMH	0.315	0.748	7	18.25	MED HEAVY
NSDE1825MH	0.315	0.748	7	18.25	HEAVY

# STAINLESS STEEL GAS SPRINGS

**6 X 15  
SERIES**



Page 21-22

**8 X 18  
SERIES**



Page 23-25

**10 X 22  
14 X 28  
SERIES**

Page 26-27

## STAINLESS STEEL GAS SPRING (6X15)



All lengths are measured with end fittings attached. Fittings are only included when specified in the 'End Fitting' column.

Part Number	Rod diam.	Tube diam	Stroke Length	Extended Length	P1 Force (lbs)
NSSG750S20PC1	0.25	0.591	2	7.5	20
NSSG750S20MT1	0.25	0.591	2	7.5	20
NSSG750S40PC1	0.25	0.591	2	7.5	40
NSSG750S40MT1	0.25	0.591	2	7.5	40
NSSG750S60PC1	0.25	0.591	2	7.5	60
NSSG750S60MT1	0.25	0.591	2	7.5	60
NSSG750S80PC1	0.25	0.591	2	7.5	80
NSSG750S80MT1	0.25	0.591	2	7.5	80
NSSG750S100PC1	0.25	0.591	2	7.5	100
NSSG750S100MT1	0.25	0.591	2	7.5	100
NSSG960S20PC1	0.25	0.591	3.15	9.6	20
NSSG960S20MT1	0.25	0.591	3.15	9.6	20
NSSG960S40PC1	0.25	0.591	3.15	9.6	40
NSSG960S40MT1	0.25	0.591	3.15	9.6	40
NSSG960S60PC1	0.25	0.591	3.15	9.6	60
NSSG960S60MT1	0.25	0.591	3.15	9.6	60
NSSG960S80PC1	0.25	0.591	3.15	9.6	80
NSSG960S80MT1	0.25	0.591	3.15	9.6	80
NSSG1000S20PC1	0.25	0.591	3	10	20
NSSG1000S20MT1	0.25	0.591	3	10	20
NSSG1000S40PC1	0.25	0.591	3	10	40
NSSG1000S40MT1	0.25	0.591	3	10	40
NSSG1000S60PC1	0.25	0.591	3	10	60
NSSG1000S60MT1	0.25	0.591	3	10	60
NSSG1000S80PC1	0.25	0.591	3	10	80
NSSG1000S80MT1	0.25	0.591	3	10	80
NSSG1200S20PC1	0.25	0.591	3.5	12	20
NSSG1200S20MT1	0.25	0.591	3.5	12	20
NSSG1200S40PC1	0.25	0.591	3.5	12	40
NSSG1200S40MT1	0.25	0.591	3.5	12	40
NSSG1200S60PC1	0.25	0.591	3.5	12	60
NSSG1200S60MT1	0.25	0.591	3.5	12	60
NSSG1200S80PC1	0.25	0.591	3.5	12	80
NSSG1200S80MT1	0.25	0.591	3.5	12	80
NSSG1450S20PC1	0.25	0.591	5	14.5	20
NSSG1450S20MT1	0.25	0.591	5	14.5	20
NSSG1450S40PC1	0.25	0.591	5	14.5	40
NSSG1450S40MT1	0.25	0.591	5	14.5	40
NSSG1450S60PC1	0.25	0.591	5	14.5	60
NSSG1450S60MT1	0.25	0.591	5	14.5	60
NSSG1450S80PC1	0.25	0.591	5	14.5	80
NSSG1450S80MT1	0.25	0.591	5	14.5	80



## STAINLESS STEEL GAS SPRING (6X15)



All lengths are measured with end fittings attached. Fittings are only included when specified in the 'End Fitting' column.

Part Number	Rod diam.	Tube diam	Stroke Length	Extended Length	P1 Force (lbs)
NSSG1500S20PC1	0.25	0.591	5.5	15	20
NSSG1500S20MT1	0.25	0.591	5.5	15	20
NSSG1500S40PC1	0.25	0.591	5.5	15	40
NSSG1500S40MT1	0.25	0.591	5.5	15	40
NSSG1500S60PC1	0.25	0.591	5.5	15	60
NSSG1500S60MT1	0.25	0.591	5.5	15	60
NSSG1500S80PC1	0.25	0.591	5.5	15	80
NSSG1500S80MT1	0.25	0.591	5.5	15	80
NSSG1719S20PC1	0.25	0.591	6.18	17.19	20
NSSG1719S20MT1	0.25	0.591	6.18	17.19	20
NSSG1718940PC1	0.25	0.591	6.18	17.19	40
NSSG1719S40MT1	0.25	0.591	6.18	17.19	40
NSSG1719S60PC1	0.25	0.591	6.18	17.19	60
NSSG1719S60MT1	0.25	0.591	6.18	17.19	60
NSSG1719S80PC1	0.25	0.591	6.18	17.19	80
NSSG1719S80MT1	0.25	0.591	6.18	17.19	80
NSSG1968S20PC1	0.25	0.591	8	19.68	20
NSSG1968S20MT1	0.25	0.591	8	19.68	20
NSSG1968S40PC1	0.25	0.591	8	19.68	40
NSSG1968S40MT1	0.25	0.591	8	19.68	40
NSSG1968S60PC1	0.25	0.591	8	19.68	60
NSSG1968S60MT1	0.25	0.591	8	19.68	60
NSSG1968S80PC1	0.25	0.591	8	19.68	80
NSSG1968S80MT1	0.25	0.591	8	19.68	80
NSSG2000S20PC1	0.25	0.591	8.12	20	20
NSSG2000S20MT1	0.25	0.591	8.12	20	20
NSSG2000S30PC1	0.25	0.591	8.12	20	30
NSSG2000S30MT1	0.25	0.591	8.12	20	30
NSSG2000S40PC1	0.25	0.591	8.12	20	40
NSSG2000S40MT1	0.25	0.591	8.12	20	40
NSSG2000S60PC1	0.25	0.591	8.12	20	60
NSSG2000S60MT1	0.25	0.591	8.12	20	60
NSSG2000S80PC1	0.25	0.591	8.12	20	80
NSSG2000S80MT1	0.25	0.591	8.12	20	80

## STAINLESS STEEL GAS SPRING (8X18)



All lengths are measured with end fittings attached. Fittings are only included when specified in the 'End Fitting' column.

Part Number	Rod diam.	Tube diam	Stroke Length	Extended Length	P1 Force (lbs)
NSSG750M90MT1	0.315	0.748	2	7.5	90
NSSG750M100PC1	0.315	0.748	2	7.5	100
NSSG750M100MT1	0.315	0.748	2	7.5	100
NSSG750M120PC1	0.315	0.748	2	7.5	120
NSSG750M120MT1	0.315	0.748	2	7.5	120
NSSG960M20PC1	0.315	0.748	3.25	9.6	20
NSSG960M20MT1	0.315	0.748	3.25	9.6	20
NSSG960M30PC1	0.315	0.748	3.25	9.6	30
NSSG960M30MT1	0.315	0.748	3.25	9.6	30
NSSG960M40PC1	0.315	0.748	3.25	9.6	40
NSSG960M40MT1	0.315	0.748	3.25	9.6	40
NSSG960M60PC1	0.315	0.748	3.25	9.6	60
NSSG960M60MT1	0.315	0.748	3.25	9.6	60
NSSG960M80PC1	0.315	0.748	3.25	9.6	80
NSSG960M80MT1	0.315	0.748	3.25	9.6	80
NSSG960M90PC1	0.315	0.748	3.25	9.6	90
NSSG960M90MT1	0.315	0.748	3.25	9.6	90
NSSG960M100PC1	0.315	0.748	3.25	9.6	100
NSSG960M100MT1	0.315	0.748	3.25	9.6	100
NSSG960M120PC1	0.315	0.748	3.25	9.6	120
NSSG960M120MT1	0.315	0.748	3.25	9.6	120
NSSG1000M90PC1	0.315	0.748	3	10	90
NSSG1000M90MT1	0.315	0.748	3	10	90
NSSG1000M100PC1	0.315	0.748	3	10	100
NSSG1000M100MT1	0.315	0.748	3	10	100
NSSG1000M120PC1	0.315	0.748	3	10	120
NSSG1000M120MT1	0.315	0.748	3	10	120
NSSG1200M20PC1	0.315	0.71	3.5	12	20
NSSG1200M20MT1	0.315	0.71	3.5	12	20
NSSG1200M40PC1	0.315	0.71	3.5	12	40
NSSG1200M40MT1	0.315	0.71	3.5	12	40
NSSG1200M60PC1	0.315	0.71	3.5	12	60
NSSG1200M60MT1	0.315	0.71	3.5	12	60
NSSG1200M80PC1	0.315	0.71	3.5	12	80
NSSG1200M80MT1	0.315	0.71	3.5	12	80
NSSG1200M100PC1	0.315	0.71	3.5	12	100
NSSG1200M100MT1	0.315	0.71	3.5	12	100
NSSG1200M120PC1	0.315	0.71	3.5	12	120
NSSG1200M120MT1	0.315	0.71	3.5	12	120
NSSG1221M20PC1	0.315	0.748	4	12.21	20
NSSG1221M20MT1	0.315	0.748	4	12.21	20
NSSG1221M30PC1	0.315	0.748	4	12.21	30
NSSG1221M30MT1	0.315	0.748	4	12.21	30
NSSG1221M40PC1	0.315	0.748	4	12.21	40
NSSG1221M40MT1	0.315	0.748	4	12.21	40
NSSG1221M60PC1	0.315	0.748	4	12.21	60
NSSG1221M60MT1	0.315	0.748	4	12.21	60
NSSG1221M80PC1	0.315	0.748	4	12.21	80
NSSG1221M80MT1	0.315	0.748	4	12.21	80
NSSG1221M100PC1	0.315	0.748	4	12.21	100
NSSG1221M100MT1	0.315	0.748	4	12.21	100
NSSG1221M120PC1	0.315	0.748	4	12.21	120
NSSG1221M120MT1	0.315	0.748	4	12.21	120
NSSG1221M150PC1	0.315	0.748	4	12.21	150
NSSG1221M150MT1	0.315	0.748	4	12.21	150

GAS SPRINGS & DAMPERS



### STAINLESS STEEL GAS SPRING (8X18)



All lengths are measured with end fittings attached. Fittings are only included when specified in the 'End Fitting' column.

Part Number	Rod diam.	Tube diam	Stroke Length	Extended Length	P1 Force (lbs)
NSSG1450M20MT1	0.315	0.748	5	14.5	20
NSSG1450M20PC1	0.315	0.748	5	14.5	20
NSSG1450M30MT1	0.315	0.748	5	14.5	30
NSSG1450M30PC1	0.315	0.748	5	14.5	30
NSSG1450M40MT1	0.315	0.748	5	14.5	40
NSSG1450M40PC1	0.315	0.748	5	14.5	40
NSSG1450M60MT1	0.315	0.748	5	14.5	60
NSSG1450M60PC1	0.315	0.748	5	14.5	60
NSSG1450M75MT1	0.315	0.748	5	14.5	75
NSSG1450M75PC1	0.315	0.748	5	14.5	75
NSSG1450M90MT1	0.315	0.748	5	14.5	90
NSSG1450M90PC1	0.315	0.748	5	14.5	90
NSSG1450M120MT1	0.315	0.748	5	14.5	120
NSSG1450M120PC1	0.315	0.748	5	14.5	120
NSSG1450M150PC1	0.315	0.748	5	14.5	150
NSSG1450M150MT1	0.315	0.748	5	14.5	150
NSSG1527M20PC1	0.315	0.71	5	15.27	20
NSSG1527M20MT1	0.315	0.71	5	15.27	20
NSSG1527M40PC1	0.315	0.71	5	15.27	40
NSSG1527M40MT1	0.315	0.71	5	15.27	40
NSSG1527M60PC1	0.315	0.71	5	15.27	60
NSSG1527M60MT1	0.315	0.71	5	15.27	60
NSSG1527M80PC1	0.315	0.71	5	15.27	80
NSSG1527M80MT1	0.315	0.71	5	15.27	80
NSSG1527M100PC1	0.315	0.71	5	15.27	100
NSSG1527M100MT1	0.315	0.71	5	15.27	100
NSSG1527M120PC1	0.315	0.71	5	15.27	120
NSSG1527M120MT1	0.315	0.71	5	15.27	120
NSSG1527M150MT1	0.315	0.71	5	15.27	150
NSSG1527M150PC1	0.315	0.71	5	15.27	150
NSSG1700M20PC1	0.315	0.71	6	17	20
NSSG1700M20MT1	0.315	0.71	6	17	20
NSSG1700M40PC1	0.315	0.71	6	17	40
NSSG1700M40MT1	0.315	0.71	6	17	40
NSSG1700M60PC1	0.315	0.71	6	17	60
NSSG1700M60MT1	0.315	0.71	6	17	60
NSSG1700M80PC1	0.315	0.71	6	17	80
NSSG1700M80MT1	0.315	0.71	6	17	80
NSSG1700M100PC1	0.315	0.71	6	17	100
NSSG1700M100MT1	0.315	0.71	6	17	100
NSSG1700M120PC1	0.315	0.71	6	17	120
NSSG1700M120MT1	0.315	0.71	6	17	120
NSSG1700M150PC1	0.315	0.71	6	17	150
NSSG1700M150MT1	0.315	0.71	6	17	150



## STAINLESS STEEL GAS SPRING (8X18)



All lengths are measured with end fittings attached. Fittings are only included when specified in the 'End Fitting' column.

Part Number	Rod diam.	Tube diam	Stroke Length	Extended Length	P1 Force (lbs)
NSSG1850M20MT1	0.315	0.748	7.25	18.5	20
NSSG1850M20PC1	0.315	0.748	7.25	18.5	20
NSSG1850M30MT1	0.315	0.748	7.25	18.5	30
NSSG1850M30PC1	0.315	0.748	7.25	18.5	30
NSSG1850M50MT1	0.315	0.748	7.25	18.5	50
NSSG1850M50PC1	0.315	0.748	7.25	18.5	50
NSSG1850M60MT1	0.315	0.748	7.25	18.5	60
NSSG1850M60PC1	0.315	0.748	7.25	18.5	60
NSSG1850M75MT1	0.315	0.748	7.25	18.5	75
NSSG1850M75PC1	0.315	0.748	7.25	18.5	75
NSSG1850M90MT1	0.315	0.748	7.25	18.5	90
NSSG1850M90PC1	0.315	0.748	7.25	18.5	90
NSSG1850M120MT1	0.315	0.748	7.25	18.5	120
NSSG1850M120PC1	0.315	0.748	7.25	18.5	120
NSSG1850M150MT1	0.315	0.748	7.25	18.5	150
NSSG1850M150PC1	0.315	0.748	7.25	18.5	150
NSSG1963M20PC1	0.315	0.71	7	19.63	20
NSSG1963M20MT1	0.315	0.71	7	19.63	20
NSSG1963M40PC1	0.315	0.71	7	19.63	40
NSSG1963M40MT1	0.315	0.71	7	19.63	40
NSSG1963M60PC1	0.315	0.71	7	19.63	60
NSSG1963M60MT1	0.315	0.71	7	19.63	60
NSSG1963M80PC1	0.315	0.71	7	19.63	80
NSSG1963M80MT1	0.315	0.71	7	19.63	80
NSSG1963M100PC1	0.315	0.71	7	19.63	100
NSSG1963M100MT1	0.315	0.71	7	19.63	100
NSSG1963M120PC1	0.315	0.71	7	19.63	120
NSSG1963M120MT1	0.315	0.71	7	19.63	120
NSSG1963M150PC1	0.315	0.71	7	19.63	150
NSSG1963M150MT1	0.315	0.71	7	19.63	150
NSG2000M20PC1	0.315	0.748	8	20	20
NSG2000M20MT1	0.315	0.748	8	20	20
NSG2000M30PC1	0.315	0.748	8	20	30
NSG2000M40MT1	0.315	0.748	8	20	40
NSG2000M40PC1	0.315	0.748	8	20	40
NSG2000M60MT1	0.315	0.748	8	20	60
NSG2000M60PC1	0.315	0.748	8	20	60
NSG2000M90PC1	0.315	0.748	8	20	90
NSG2000M90MT1	0.315	0.748	8	20	90
NSG2000M120PC1	0.315	0.748	8	20	120
NSG2000M120MT1	0.315	0.748	8	20	120
NSG2000M150PC1	0.315	0.748	8	20	150
NSG2000M150MT1	0.315	0.748	8	20	150
NSSG2303M30PC1	0.315	0.71	8.5	23.03	30
NSSG2303M30MT1	0.315	0.71	8.5	23.03	30
NSSG2303M60PC1	0.315	0.71	8.5	23.03	60
NSSG2303M60MT1	0.315	0.71	8.5	23.03	60
NSSG2303M90PC1	0.315	0.71	8.5	23.03	90
NSSG2303M90MT1	0.315	0.71	8.5	23.03	90
NSSG2303M120PC1	0.315	0.71	8.5	23.03	120
NSSG2303M120MT1	0.315	0.71	8.5	23.03	120
NSSG2303M150PC1	0.315	0.71	8.5	23.03	150
NSSG2303M150MT1	0.315	0.71	8.5	23.03	150



STAINLESS STEEL GAS SPRING (10X22)



All lengths are measured with end fittings attached. Fittings are only included when specified in the 'End Fitting' column.

Table with 7 columns: Part Number, Rod diam., Tube diam., Stroke Length, Extended Length, P1 Force (lbs), Thread. It lists various gas spring models and their specifications.

## STAINLESS STEEL GAS SPRING (14X28)



All lengths are measured with end fittings attached. Fittings are only included when specified in the 'End Fitting' column.

Part Number	Rod diam.	Tube diam	Stroke Length	Extended Length	P1 Force (lbs)	Thread
NSSG2550X250	0.55	1.1	10.6	25.5	250	M8
NSSG2550X300	0.55	1.1	10.6	25.5	300	M8
NSSG2550X350	0.55	1.1	10.6	25.5	325	M8
NSSG3550X250	0.55	1.1	15	35.5	250	M8
NSSG3550X300	0.55	1.1	15	35.5	300	M8
NSSG3550X350	0.55	1.1	15	35.5	325	M8
NSSG4921X250	0.55	1.1	21.65	49.21	250	M8
NSSG4921X300	0.55	1.1	21.65	49.21	300	M8
NSSG4921X350	0.55	1.1	21.65	49.21	325	M8

# EXTERNAL LOCKING GAS SPRINGS

**6 X 15  
SERIES**



Page 29-30

**8 X 18  
SERIES**



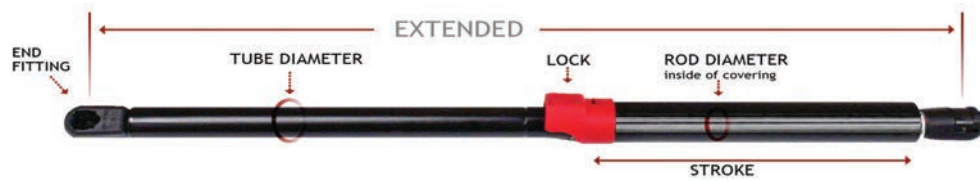
Page 31-33

**10 X 22  
SERIES**



Page 34

## EXTERNAL LOCKING GAS SPRING (6X15)

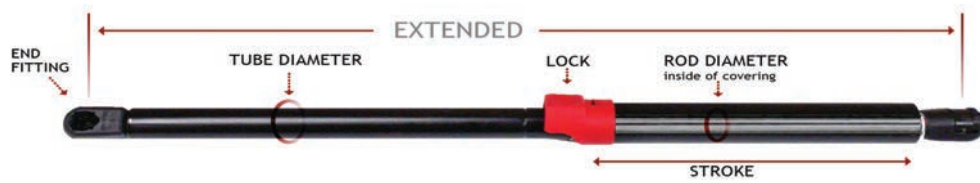


All lengths are measured with end fittings attached. Fittings are only included when specified in the 'End Fitting' column.

Part Number	Rod diam.	Tube diam	Stroke Length	Extended Length	P1 Force (lbs)
NSLG750S20PC1	0.25	0.591	2	7.5	20
NSLG750S20MT1	0.25	0.591	2	7.5	20
NSLG750S40PC1	0.25	0.591	2	7.5	40
NSLG750S40MT1	0.25	0.591	2	7.5	40
NSLG750S60PC1	0.25	0.591	2	7.5	60
NSLG750S60MT1	0.25	0.591	2	7.5	60
NSLG750S80PC1	0.25	0.591	2	7.5	80
NSLG750S80MT1	0.25	0.591	2	7.5	80
NSLG750S100PC1	0.25	0.591	2	7.5	100
NSLG750S100MT1	0.25	0.591	2	7.5	100
NSLG960S20PC1	0.25	0.591	3.15	9.6	20
NSLG960S20MT1	0.25	0.591	3.15	9.6	20
NSLG960S40PC1	0.25	0.591	3.15	9.6	40
NSLG960S40MT1	0.25	0.591	3.15	9.6	40
NSLG960S60PC1	0.25	0.591	3.15	9.6	60
NSLG960S60MT1	0.25	0.591	3.15	9.6	60
NSLG960S80PC1	0.25	0.591	3.15	9.6	80
NSLG960S80MT1	0.25	0.591	3.15	9.6	80
NSLG1000S20PC1	0.25	0.591	3	10	20
NSLG1000S20MT1	0.25	0.591	3	10	20
NSLG1000S40PC1	0.25	0.591	3	10	40
NSLG1000S40MT1	0.25	0.591	3	10	40
NSLG1000S60PC1	0.25	0.591	3	10	60
NSLG1000S60MT1	0.25	0.591	3	10	60
NSLG1000S80PC1	0.25	0.591	3	10	80
NSLG1000S80MT1	0.25	0.591	3	10	80
NSLG1200S20PC1	0.25	0.591	3.5	12	20
NSLG1200S20MT1	0.25	0.591	3.5	12	20
NSLG1200S40PC1	0.25	0.591	3.5	12	40
NSLG1200S40MT1	0.25	0.591	3.5	12	40
NSLG1200S60PC1	0.25	0.591	3.5	12	60
NSLG1200S60MT1	0.25	0.591	3.5	12	60
NSLG1200S80PC1	0.25	0.591	3.5	12	80
NSLG1200S80MT1	0.25	0.591	3.5	12	80
NSLG1500S20PC1	0.25	0.591	5	14.5	20
NSLG1500S20MT1	0.25	0.591	5	14.5	20
NSLG1500S40PC1	0.25	0.591	5	14.5	40
NSLG1500S40MT1	0.25	0.591	5	14.5	40
NSLG1500S60PC1	0.25	0.591	5	14.5	60
NSLG1500S60MT1	0.25	0.591	5	14.5	60
NSLG1500S80PC1	0.25	0.591	5	14.5	80
NSLG1500S80MT1	0.25	0.591	5	14.5	80



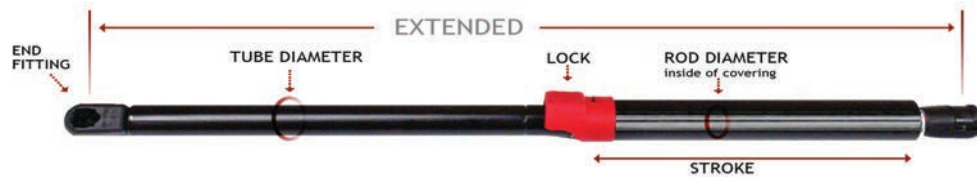
### EXTERNAL LOCKING GAS SPRING (6X15)



All lengths are measured with end fittings attached. Fittings are only included when specified in the 'End Fitting' column.

Part Number	Rod diam.	Tube diam	Stroke Length	Extended Length	P1 Force (lbs)
NSLG1550S20PC1	0.25	0.591	5.5	15	20
NSLG1550S20MT1	0.25	0.591	5.5	15	20
NSLG1550S40PC1	0.25	0.591	5.5	15	40
NSLG1550S40MT1	0.25	0.591	5.5	15	40
NSLG1550S60PC1	0.25	0.591	5.5	15	60
NSLG1550S60MT1	0.25	0.591	5.5	15	60
NSLG1550S80PC1	0.25	0.591	5.5	15	80
NSLG1550S80MT1	0.25	0.591	5.5	15	80
NSLG1719S20PC1	0.25	0.591	6.18	17.19	20
NSLG1719S20MT1	0.25	0.591	6.18	17.19	20
NSLG1719S40PC1	0.25	0.591	6.18	17.19	40
NSLG1719S40MT1	0.25	0.591	6.18	17.19	40
NSLG1719S60PC1	0.25	0.591	6.18	17.19	60
NSLG1719S60MT1	0.25	0.591	6.18	17.19	60
NSLG1719S80PC1	0.25	0.591	6.18	17.19	80
NSLG1719S80MT1	0.25	0.591	6.18	17.19	80
NSLG1968S20PC1	0.25	0.591	8	19.68	20
NSLG1968S20MT1	0.25	0.591	8	19.68	20
NSLG1968S40PC1	0.25	0.591	8	19.68	40
NSLG1968S40MT1	0.25	0.591	8	19.68	40
NSLG1968S60PC1	0.25	0.591	8	19.68	60
NSLG1968S60MT1	0.25	0.591	8	19.68	60
NSLG1968S80PC1	0.25	0.591	8	19.68	80
NSLG1968S80MT1	0.25	0.591	8	19.68	80
NSLG2000S20PC1	0.25	0.591	8.12	20	20
NSLG2000S20MT1	0.25	0.591	8.12	20	20
NSLG2000S30PC1	0.25	0.591	8.12	20	30
NSLG2000S30MT1	0.25	0.591	8.12	20	30
NSLG2000S40PC1	0.25	0.591	8.12	20	40
NSLG2000S40MT1	0.25	0.591	8.12	20	40
NSLG2000S60PC1	0.25	0.591	8.12	20	60
NSLG2000S60MT1	0.25	0.591	8.12	20	60
NSLG2000S80PC1	0.25	0.591	8.12	20	80
NSLG2000S80MT1	0.25	0.591	8.12	20	80

EXTERNAL LOCKING GAS SPRING (8X18)



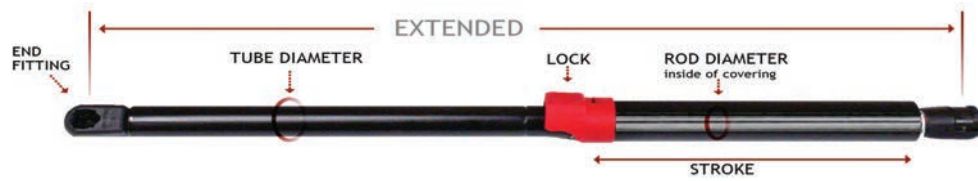
All lengths are measured with end fittings attached. Fittings are only included when specified in the 'End Fitting' column.

Part Number	Rod diam.	Tube diam	Stroke Length	Extended Length	P1 Force (lbs)
NSLG750M90MT1	0.315	0.748	2	7.5	90
NSLG750M100PC1	0.315	0.748	2	7.5	100
NSLG750M100MT1	0.315	0.748	2	7.5	100
NSLG750M120PC1	0.315	0.748	2	7.5	120
NSLG750M120MT1	0.315	0.748	2	7.5	120
NSLG960M20PC1	0.315	0.748	3.25	9.6	20
NSLG960M20MT1	0.315	0.748	3.25	9.6	20
NSLG960M30PC1	0.315	0.748	3.25	9.6	30
NSLG960M30MT1	0.315	0.748	3.25	9.6	30
NSLG960M40PC1	0.315	0.748	3.25	9.6	40
NSLG960M40MT1	0.315	0.748	3.25	9.6	40
NSLG960M60PC1	0.315	0.748	3.25	9.6	60
NSLG960M60MT1	0.315	0.748	3.25	9.6	60
NSLG960M80PC1	0.315	0.748	3.25	9.6	80
NSLG960M80MT1	0.315	0.748	3.25	9.6	80
NSLG960M90PC1	0.315	0.748	3.25	9.6	90
NSLG960M90MT1	0.315	0.748	3.25	9.6	90
NSLG960M100PC1	0.315	0.748	3.25	9.6	100
NSLG960M100MT1	0.315	0.748	3.25	9.6	100
NSLG960M120PC1	0.315	0.748	3.25	9.6	120
NSLG960M120MT1	0.315	0.748	3.25	9.6	120
NSLG1000M90PC1	0.315	0.748	3	10	90
NSLG1000M90MT1	0.315	0.748	3	10	90
NSLG1000M100PC1	0.315	0.748	3	10	100
NSLG1000M100MT1	0.315	0.748	3	10	100
NSLG1000M120PC1	0.315	0.748	3	10	120
NSLG1000M120MT1	0.315	0.748	3	10	120
NSLG1200M20MT1	0.315	0.748	3.5	12	20
NSLG1200M20PC1	0.315	0.748	3.5	12	20
NSLG1200M30MT1	0.315	0.748	3.5	12	30
NSLG1200M30PC1	0.315	0.748	3.5	12	30
NSLG1200M40MT1	0.315	0.748	3.5	12	40
NSLG1200M40PC1	0.315	0.748	3.5	12	40
NSLG1200M60MT1	0.315	0.748	3.5	12	60
NSLG1200M60PC1	0.315	0.748	3.5	12	60
NSLG1200M80PC1	0.315	0.748	3.5	12	80
NSLG1200M90PC1	0.315	0.748	3.5	12	90
NSLG1200M90MT1	0.315	0.748	3.5	12	90
NSLG1200M120PC1	0.315	0.748	3.5	12	120
NSLG1200M120MT1	0.315	0.748	3.5	12	120
NSLG1221M20PC1	0.315	0.748	4	12.21	20
NSLG1221M20MT1	0.315	0.748	4	12.21	20
NSLG1221M30PC1	0.315	0.748	4	12.21	30
NSLG1221M30MT1	0.315	0.748	4	12.21	30
NSLG1221M40PC1	0.315	0.748	4	12.21	40
NSLG1221M40MT1	0.315	0.748	4	12.21	40
NSLG1221M60PC1	0.315	0.748	4	12.21	60
NSLG1221M60MT1	0.315	0.748	4	12.21	60
NSLG1221M80PC1	0.315	0.748	4	12.21	80
NSLG1221M80MT1	0.315	0.748	4	12.21	80
NSLG1221M100PC1	0.315	0.748	4	12.21	100
NSLG1221M100MT1	0.315	0.748	4	12.21	100
NSLG1221M120PC1	0.315	0.748	4	12.21	120
NSLG1221M120MT1	0.315	0.748	4	12.21	120
NSLG1221M150PC1	0.315	0.748	4	12.21	150
NSLG1221M150MT1	0.315	0.748	4	12.21	150

GAS SPRINGS & DAMPERS



## EXTERNAL LOCKING GAS SPRING (8X18)

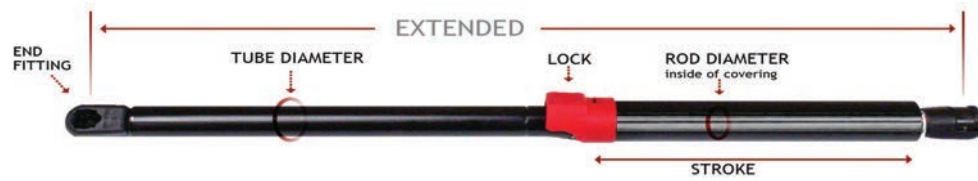


All lengths are measured with end fittings attached. Fittings are only included when specified in the 'End Fitting' column.

Part Number	Rod diam.	Tube diam	Stroke Length	Extended Length	P1 Force (lbs)
NSLG1450M20MT1	0.315	0.748	5	14.5	20
NSLG1450M20PC1	0.315	0.748	5	14.5	20
NSLG1450M30MT1	0.315	0.748	5	14.5	30
NSLG1450M30PC1	0.315	0.748	5	14.5	30
NSLG1450M40MT1	0.315	0.748	5	14.5	40
NSLG1450M40PC1	0.315	0.748	5	14.5	40
NSLG1450M60MT1	0.315	0.748	5	14.5	60
NSLG1450M60PC1	0.315	0.748	5	14.5	60
NSLG1450M75MT1	0.315	0.748	5	14.5	75
NSLG1450M75PC1	0.315	0.748	5	14.5	75
NSLG1450M90MT1	0.315	0.748	5	14.5	90
NSLG1450M90PC1	0.315	0.748	5	14.5	90
NSLG1450M120MT1	0.315	0.748	5	14.5	120
NSLG1450M120PC1	0.315	0.748	5	14.5	120
NSLG1450M150PC1	0.315	0.748	5	14.5	150
NSLG1450M150MT1	0.315	0.748	5	14.5	150
NSLG1527M20PC1	0.315	0.748	5.5	15.27	20
NSLG1527M20MT1	0.315	0.748	5.5	15.27	20
NSLG1527M30PC1	0.315	0.748	5.5	15.27	30
NSLG1527M30MT1	0.315	0.748	5.5	15.27	30
NSLG1527M50PC1	0.315	0.748	5.5	15.27	50
NSLG1527M30MT1	0.315	0.748	5.5	15.27	50
NSLG1527M75PC1	0.315	0.748	5.5	15.27	75
NSLG1527M75MT1	0.315	0.748	5.5	15.27	75
NSLG1527M90PC1	0.315	0.748	5.5	15.27	90
NSLG1527M90MT1	0.315	0.748	5.5	15.27	90
NSLG1527M120PC1	0.315	0.748	5.5	15.27	120
NSLG1527M120MT1	0.315	0.748	5.5	15.27	120
NSLG1527M150PC1	0.315	0.748	5.5	15.27	150
NSLG1527M150MT1	0.315	0.748	5.5	15.27	150
NSLG1700M20PC1	0.315	0.71	6	17	20
NSLG1700M20MT1	0.315	0.71	6	17	20
NSLG1700M40PC1	0.315	0.71	6	17	40
NSLG1700M40MT1	0.315	0.71	6	17	40
NSLG1700M60PC1	0.315	0.71	6	17	60
NSLG1700M60MT1	0.315	0.71	6	17	60
NSLG1700M80PC1	0.315	0.71	6	17	80
NSLG1700M80MT1	0.315	0.71	6	17	80
NSLG1700M100PC1	0.315	0.71	6	17	100
NSLG1700M100MT1	0.315	0.71	6	17	100
NSLG1700M120PC1	0.315	0.71	6	17	120
NSLG1700M120MT1	0.315	0.71	6	17	120
NSLG1700M150PC1	0.315	0.71	6	17	150
NSLG1700M150MT1	0.315	0.71	6	17	150



## EXTERNAL LOCKING GAS SPRING (8X18)

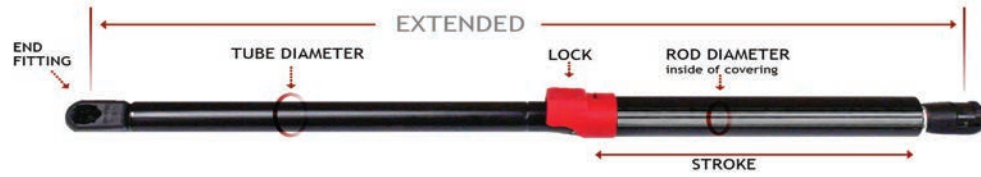


All lengths are measured with end fittings attached. Fittings are only included when specified in the 'End Fitting' column.

Part Number	Rod diam.	Tube diam	Stroke Length	Extended Length	P1 Force (lbs)
NSLG1850M20MT1	0.315	0.748	7.25	18.5	20
NSLG1850M20PC1	0.315	0.748	7.25	18.5	20
NSLG1850M30MT1	0.315	0.748	7.25	18.5	30
NSLG1850M30PC1	0.315	0.748	7.25	18.5	30
NSLG1850M50MT1	0.315	0.748	7.25	18.5	50
NSLG1850M50PC1	0.315	0.748	7.25	18.5	50
NSLG1850M60MT1	0.315	0.748	7.25	18.5	60
NSLG1850M60PC1	0.315	0.748	7.25	18.5	60
NSLG1850M75MT1	0.315	0.748	7.25	18.5	75
NSLG1850M75PC1	0.315	0.748	7.25	18.5	75
NSLG1850M90MT1	0.315	0.748	7.25	18.5	90
NSLG1850M90PC1	0.315	0.748	7.25	18.5	90
NSLG1850M120MT1	0.315	0.748	7.25	18.5	120
NSLG1850M120PC1	0.315	0.748	7.25	18.5	120
NSLG1850M150MT1	0.315	0.748	7.25	18.5	150
NSLG1850M150PC1	0.315	0.748	7.25	18.5	150
NSLG1963M20PC1	0.315	0.71	7	19.63	20
NSLG1963M20MT1	0.315	0.71	7	19.63	20
NSLG1963M40PC1	0.315	0.71	7	19.63	40
NSLG1963M40MT1	0.315	0.71	7	19.63	40
NSLG1963M60PC1	0.315	0.71	7	19.63	60
NSLG1963M60MT1	0.315	0.71	7	19.63	60
NSLG1963M80PC1	0.315	0.71	7	19.63	80
NSLG1963M80MT1	0.315	0.71	7	19.63	80
NSLG1963M100PC1	0.315	0.71	7	19.63	100
NSLG1963M100MT1	0.315	0.71	7	19.63	100
NSLG1963M120PC1	0.315	0.71	7	19.63	120
NSLG1963M120MT1	0.315	0.71	7	19.63	120
NSLG1963M150PC1	0.315	0.71	7	19.63	150
NSLG1963M150MT1	0.315	0.71	7	19.63	150
NSLG2000M20PC1	0.315	0.748	8	20	20
NSLG2000M20MT1	0.315	0.748	8	20	20
NSLG2000M30PC1	0.315	0.748	8	20	30
NSLG2000M40MT1	0.315	0.748	8	20	40
NSLG2000M40PC1	0.315	0.748	8	20	40
NSLG2000M60MT1	0.315	0.748	8	20	60
NSLG2000M60PC1	0.315	0.748	8	20	60
NSLG2000M90PC1	0.315	0.748	8	20	90
NSLG2000M90MT1	0.315	0.748	8	20	90
NSLG2000M120PC1	0.315	0.748	8	20	120
NSLG2000M120MT1	0.315	0.748	8	20	120
NSLG2000M150PC1	0.315	0.748	8	20	150
NSLG2000M150MT1	0.315	0.748	8	20	150
NSLG2303M30PC1	0.315	0.71	8.5	23.03	30
NSLG2303M30MT1	0.315	0.71	8.5	23.03	30
NSLG2303M60PC1	0.315	0.71	8.5	23.03	60
NSLG2303M60MT1	0.315	0.71	8.5	23.03	60
NSLG2303M90PC1	0.315	0.71	8.5	23.03	90
NSLG2303M90MT1	0.315	0.71	8.5	23.03	90
NSLG2303M120PC1	0.315	0.71	8.5	23.03	120
NSLG2303M120MT1	0.315	0.71	8.5	23.03	120
NSLG2303M150PC1	0.315	0.71	8.5	23.03	150
NSLG2303M150MT1	0.315	0.71	8.5	23.03	150



## EXTERNAL LOCKING GAS SPRING (10X22)



All lengths are measured with end fittings attached. Fittings are only included when specified in the 'End Fitting' column.

Part Number	Rod diam.	Tube diam	Stroke Length	Extended Length	P1 Force (lbs)	Thread
NSLG1825L50MT2	0.394	0.866	7.36	18.25	50	M8
NSLG1825L75MT2	0.394	0.866	7.36	18.25	75	M8
NSLG1825L100MT2	0.394	0.866	7.36	18.25	100	M8
NSLG1825L125MT2	0.394	0.866	7.36	18.25	125	M8
NSLG1825L150MT2	0.394	0.866	7.36	18.25	150	M8
NSLG1825L175MT2	0.394	0.866	7.36	18.25	175	M8
NSLG1825L200MT2	0.394	0.866	7.36	18.25	200	M8
NSLG1825L225MT2	0.394	0.866	7.36	18.25	225	M8
NSLG1825L250MT2	0.394	0.866	7.36	18.25	250	M8
NSLG2050L50MT2	0.394	0.866	7.75	20.5	50	M8
NSLG2050L75MT2	0.394	0.866	7.75	20.5	75	M8
NSLG2050L100MT2	0.394	0.866	7.75	20.5	100	M8
NSLG2050L125MT2	0.394	0.866	7.75	20.5	125	M8
NSLG2050L150MT2	0.394	0.866	7.75	20.5	150	M8
NSLG2050L175MT2	0.394	0.866	7.75	20.5	175	M8
NSLG2050L200MT2	0.394	0.866	7.75	20.5	200	M8
NSLG2050L225MT2	0.394	0.866	7.75	20.5	225	M8
NSLG2050L250MT2	0.394	0.866	7.75	20.5	250	M8
NSLG2122L125MT2	0.394	0.866	8.44	21.22	125	M8
NSLG2122L150MT2	0.394	0.866	8.44	21.22	150	M8
NSLG2122L200MT2	0.394	0.866	8.44	21.22	200	M8
NSLG2122L250MT2	0.394	0.866	8.44	21.22	250	M8
NSLG2550L50MT2	0.394	0.866	11	25.5	50	M8
NSLG2550L75MT2	0.394	0.866	11	25.5	75	M8
NSLG2550L100MT2	0.394	0.866	11	25.5	100	M8
NSLG2550L125MT2	0.394	0.866	11	25.5	125	M8
NSLG2550L150MT2	0.394	0.866	11	25.5	150	M8
NSLG2550L175MT2	0.394	0.866	11	25.5	175	M8
NSLG2550L200MT2	0.394	0.866	11	25.5	200	M8
NSLG2550L225MT2	0.394	0.866	11	25.5	225	M8
NSLG2550L250MT2	0.394	0.866	11	25.5	250	M8
NSLG2780L75MT2	0.394	0.866	10	27.8	75	M8
NSLG2780L100MT2	0.394	0.866	10	27.8	100	M8
NSLG2780L125MT2	0.394	0.866	10	27.8	125	M8
NSLG2780L150MT2	0.394	0.866	10	27.8	150	M8
NSLG2780L200MT2	0.394	0.866	10	27.8	200	M8
NSLG2780L250MT2	0.394	0.866	10	27.8	250	M8
NSLG3550L50MT2	0.394	0.866	15	35.5	50	M8
NSLG3550L75MT2	0.394	0.866	15	35.5	75	M8
NSLG3550L100MT2	0.394	0.866	15	35.5	100	M8
NSLG3550L125MT2	0.394	0.866	15	35.5	125	M8
NSLG3550L150MT2	0.394	0.866	15	35.5	150	M8
NSLG3550L175MT2	0.394	0.866	15	35.5	175	M8
NSLG3550L200MT2	0.394	0.866	15	35.5	200	M8
NSLG3550L225MT2	0.394	0.866	15	35.5	225	M8
NSLG3550L250MT2	0.394	0.866	15	35.5	250	M8

# TENSION/PULL/TRACTION GAS SPRINGS

8 X 22  
SERIES



Page 36

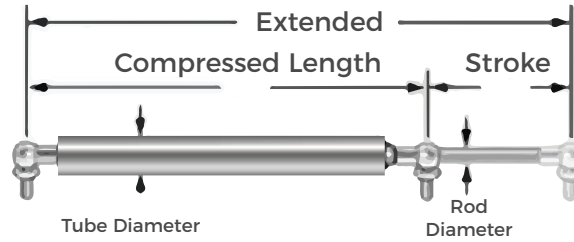
10 X 28  
SERIES



Page 37-38



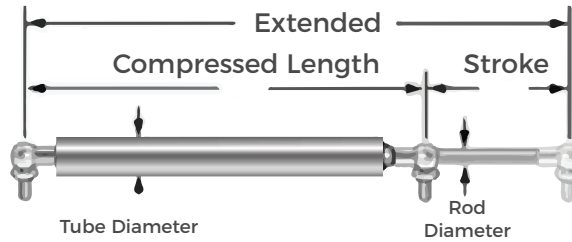
### TENSION GAS SPRING (8X22)



All lengths are measured with end fittings attached. Fittings are only included when specified in the 'End Fitting' column.

Part Number	Rod diam.	Tube diam	Stroke Length	Extended Length	P1 Force (lbs)
NST1693Q20MT2	0.315	0.866	4.02	16.93	20
NST1693Q30MT2	0.315	0.866	4.02	16.93	30
NST1693Q45MT2	0.315	0.866	4.02	16.93	45
NST1693Q55MT2	0.315	0.866	4.02	16.93	55
NST1693Q80MT2	0.315	0.866	4.02	16.93	80
NST1693Q100MT2	0.315	0.866	4.02	16.93	100
NST2260Q20MT2	0.315	0.866	5.91	22.6	20
NST2260Q30MT2	0.315	0.866	5.91	22.6	30
NST2260Q45MT2	0.315	0.866	5.91	22.6	45
NST2260Q55MT2	0.315	0.866	5.91	22.6	55
NST2260Q80MT2	0.315	0.866	5.91	22.6	80
NST2260Q100MT2	0.315	0.866	5.91	22.6	100
NST2850Q20MT2	0.315	0.866	7.87	28.5	20
NST2850Q30MT2	0.315	0.866	7.87	28.5	30
NST2850Q45MT2	0.315	0.866	7.87	28.5	45
NST2850Q55MT2	0.315	0.866	7.87	28.5	55
NST2850Q80MT2	0.315	0.866	7.87	28.5	80
NST2850Q100MT2	0.315	0.866	7.87	28.5	100

TENSION GAS SPRING (10X28)

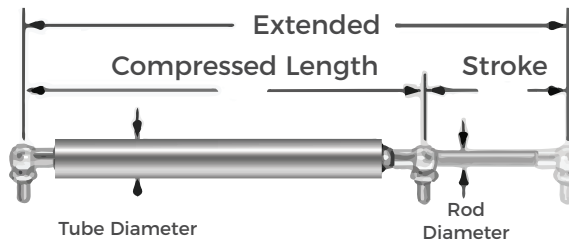


All lengths are measured with end fittings attached. Fittings are only included when specified in the 'End Fitting' column.

Part Number	Rod diam.	Tube diam	Stroke Length	Extended Length	P1 Force (lbs)
NST1004R20MT2	0.394	1.1	1.97	10.04	20
NST1004R30MT2	0.394	1.1	1.97	10.04	30
NST1004R40MT2	0.394	1.1	1.97	10.04	40
NST1004R60MT2	0.394	1.1	1.97	10.04	60
NST1004R80MT2	0.394	1.1	1.97	10.04	80
NST1004R100MT2	0.394	1.1	1.97	10.04	100
NST1004R150MT2	0.394	1.1	1.97	10.04	150
NST1004R200MT2	0.394	1.1	1.97	10.04	200
NST1004R250MT2	0.394	1.1	1.97	10.04	250
NST1201R20MT2	0.394	1.1	2.95	12.01	20
NST1201R30MT2	0.394	1.1	2.95	12.01	30
NST1201R40MT2	0.394	1.1	2.95	12.01	40
NST1201R60MT2	0.394	1.1	2.95	12.01	60
NST1201R80MT2	0.394	1.1	2.95	12.01	80
NST1201R100MT2	0.394	1.1	2.95	12.01	100
NST1201R150MT2	0.394	1.1	2.95	12.01	150
NST1201R200MT2	0.394	1.1	2.95	12.01	200
NST1201R250MT2	0.394	1.1	2.95	12.01	250
NST1398R20MT2	0.394	1.1	3.94	13.98	20
NST1398R30MT2	0.394	1.1	3.94	13.98	30
NST1398R40MT2	0.394	1.1	3.94	13.98	40
NST1398R60MT2	0.394	1.1	3.94	13.98	60
NST1398R80MT2	0.394	1.1	3.94	13.98	80
NST1398R100MT2	0.394	1.1	3.94	13.98	100
NST1398R150MT2	0.394	1.1	3.94	13.98	150
NST1398R200MT2	0.394	1.1	3.94	13.98	200
NST1398R250MT2	0.394	1.1	3.94	13.98	250
NST1594R20MT2	0.394	1.1	4.92	15.94	20
NST1594R30MT2	0.394	1.1	4.92	15.94	30
NST1594R40MT2	0.394	1.1	4.92	15.94	40
NST1594R60MT2	0.394	1.1	4.92	15.94	60
NST1594R80MT2	0.394	1.1	4.92	15.94	80
NST1594R100MT2	0.394	1.1	4.92	15.94	100
NST1594R150MT2	0.394	1.1	4.92	15.94	150
NST1594R200MT2	0.394	1.1	4.92	15.94	200
NST1594R250MT2	0.394	1.1	4.92	15.94	250



TENSION GAS SPRING (10X28)



All lengths are measured with end fittings attached. Fittings are only included when specified in the 'End Fitting' column.

Table with 6 columns: Part Number, Rod diam., Tube diam., Stroke Length, Extended Length, P1 Force (lbs). It lists various gas spring models and their specifications.

# GAS SPRING COMPONENTS

## END FITTINGS



Page 40

## BALL STUDS



Page 41

## BRACKETS



Page 42-44



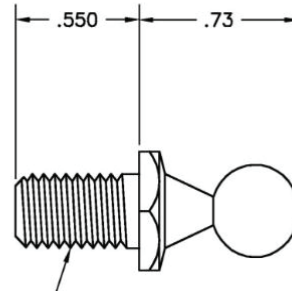
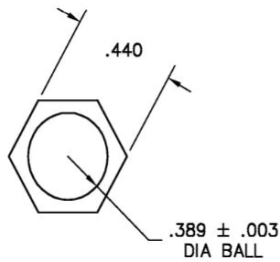
## COMPONENTS-END FITTINGS

For more dimensional information & drawings visit our website; [www.normont.com/end-fitting/](http://www.normont.com/end-fitting/)

Image	Part number	Description	Size	Thread
	PC1	Plastic connector round style	10mm / .39 Ball stud	M6
	PCE	Plastic connector CE Style	10mm / .39 Ball stud	M6
	PC2	Plastic connector round style	10mm / .39 Ball stud	M8
	PC3	Plastic Connector metal clip	10mm / .39 Ball stud	M6
	MT1	Metal ball socket	10mm / .39 Ball stud	M6
	MT1B	Metal ball socket-Black	10mm / .39 Ball stud	M6
	MT1SS	Stainless steel ball socket	10mm / .39 Ball stud	M6
	MT2	Metal ball socket	13mm Ball stud	M8
	MT2B	Metal ball socket-Black	13mm Ball stud	M6
	MT2SS	Stainless steel ball socket	13mm Ball stud	M8
	MT3	Metal ball socket	10mm / .39 Ball stud	M6
	FB1	Zinc die, through hole	.510-.515 Hole dia	M6
	FB2	Zinc die, through hole	.405-.410 Hole dia	M6
	FB3	Zinc die, through hole	.325-.330 Hole dia	M6
	FB4	Zinc die, through hole	.260-.265 Hole dia	M6
	FB5	Zinc die, through hole	.205-.210 Hole dia	M6
	NSC90	Spring slip for MT1 Series		
	NSC100	Spring clip for MT2 Series		
	EY1	Clevis End Fittings		



COMPONENTS-BALL STUDS



For more dimensional information & drawings visit our website: [www.normont.com/ball-stud/](http://www.normont.com/ball-stud/)

Image	Ball stud diameter	Thread	Material
NBS01-01	0.39	5/16-18 x .56	Zinc plated Steel
NBS01-02	0.39	5/16-18 x .75	Zinc plated Steel
NBS01-03	0.39	5/16-18 x 1.00	Zinc plated Steel
NBS01-04	10mm	M8 x 15mm	Zinc plated Steel
NBS01-01SS	0.39	5/16-18 x .56	Stainless Steel
NBS02-01	0.51	5/16-18 x .625	Zinc plated steel
NBS02-02	0.51	5/16-18 x .75	Zinc plated Steel
NBS02-03	0.51	5/16-18 x 1.00	Zinc plated Steel
NBS02-04	13mm	M8 x 15mm	Zinc plated Steel
NBS02-01SS	0.51	5/16-18 x .625	Stainless Steel



## COMPONENTS-BRACKETS

For more dimensional information & drawings visit our website; [www.normont.com/bracket/](http://www.normont.com/bracket/)

Image	Part number	Ball Stud Diameter	Description	Material
	NBF01-01	0.39	2.25 W / 1.44 H / .078Thick	Zinc Plated Steel
	NBF01-01B	0.39	2.25 W / 1.44 H / .078Thick, Black Powder coated	Zinc Plated Steel
	NBF01-01SS	0.39	2.25 W / 1.44 H / .078Thick,	Stainless Steel
	NBF01-02	0.51	2.25 W / 1.44 H / .078Thick	Zinc Plated Steel
	NBF01-02B	0.51	2.25 W / 1.44 H / .078Thick, Black Powder coated	Zinc Plated Steel
	NBF01-02SS	0.51	2.25 W / 1.44 H / .078Thick,	Stainless Steel
	NBR01-02	0.39	90 DEG BRACKET for <90 LBS	Zinc Plated Steel
	NBR01-02B	0.39	90 DEG BRACKET for <90 LBS Black Powder Coated	Zinc Plated Steel
	NBR01-02SS	0.39	90 DEG BRACKET for <90 LBS	Stainless Steel
	NBR01-02R	0.39	Reverse 90 DEG BRACKET for <90 LBS	Zinc Plated Steel

## COMPONENTS-BRACKETS

Image	Part number	Ball Stud Diameter	Description	Material
	NBR01-02RB	0.39	Reverse 90 DEG BRACKET for <90 LBS Black Powder Coated	Zinc Plated Steel
	NBR02-01	0.39	90 DEG BRACKET FOR <90 LBS	Zinc Plated
	NBR02-01B	0.39	90 DEG BRACKET FOR <90 LBS	Zinc Plated
	NBR02-01SS	0.51	90 DEG BRACKET FOR <90 LBS	Stainless Steel
	NBR02-01R	0.39	Reverse 90 DEG BRACKET FOR <90 LBS	Zinc Plated
	NBR02-01RB	0.39	Reverse 90 DEG BRACKET FOR <90 LBS Black Powder coated	Zinc Plated
	NBR02-02	0.51	90 DEG BRACKET FOR <90 LBS	Zinc Plated
	NBR02-02B	0.51	90 DEG BRACKET FOR <90 LBS	Zinc Plated
	NBR02-02SS	0.51	90 DEG BRACKET FOR <90 LBS	Stainless Steel
	NBR02-02R	0.51	Reverse 90 DEG BRACKET FOR <90 LBS	Zinc Plated



## COMPONENTS-BRACKETS

Image	Part number	Ball Stud Diameter	Description	Material
	NBR02-02RB	0.51	Reverse 90 DEG BRACKET FOR <90 LBS Black Powder coated	Zinc Plated
	NBR03-01	0.39	90 DEG BRACKET <90 LBS	Zinc Plated
	NBR03-01B	0.39	90 DEG BRACKET <90 LBS Black Powder Coated	Zinc Plated
	NBR03-01SS	0.39	90 DEG BRACKET <90 LBS	Stainless Steel
	NBR03-02	0.39	Reverse 90 DEG BRACKET <90 LBS	Zinc Plated

# INFORMATION

**PAGE  
INDEX**

Page 46-49

**TERMS &  
CONDITIONS**

Page 51



## Page Index

### Standard Gas Springs - Mini (4x12)

Part Number	Page
NSM435A	9
NSM510A	9
NSM630A	9
NSM710A	9
NSM825A	9
NSM905A	9

### Standard Gas Springs (10x20)

Part Number	Page
NSG1825L	15
NSG2050L	15
NSG2122L	15
NSG2550L	15
NSG2780L	15
NSG3550L	15

### Standard Gas Springs (6x15)

Part Number	Page
NSG750S	10
NSG960S	10
NSG1000S	10
NSG1200S	10
NSG1450S	10
NSG1500S	11
NSG1700S	11
NSG1719S	11
NSG1968S	11
NSG2000S	11

### Standard Gas Springs (14x18, 16x28)

Part Number	Page
NSG2550X	16
NSG3550X	16
NSG4921X	16
NSG5900Z	16

### Standard Gas Springs (8x18)

Part Number	Page
NSG750M	12
NSG960M	12
NSG1000M	12
NSG1200M	12
NSG1221M	12
NSG1450M	13
NSG1527M	13
NSG1700M	13
NSG1850M	14
NSG1963M	14
NSG2000M	14
NSG2303M	14

Part Index

Damper (6x15)

Compression Damper

Part Number	Page
NSDC650SL	18
NSDC650SML	18
NSDC650SM	18
NSDC650SMH	18
NSDC650SH	18
NSDC865SL	18
NSDC865SML	18
NSDC865SM	18
NSDC865SMH	18
NSDC865SH	18
NSDC1110SL	18
NSDC1110SML	18
NSDC1110SM	18
NSDC1110SMH	18
NSDC1110SH	18
NSDC1360SL	18
NSDC1360SML	18
NSDC1360SM	18
NSDC1360SMH	18
NSDC1360SH	18

Extension Damper

Part Number	Page
NSDE650SL	18
NSDE650SML	18
NSDE650SM	18
NSDE650SMH	18
NSDE650SH	18
NSDE865SL	18
NSDE865SML	18
NSDE865SM	18
NSDE865SMH	18
NSDE865SH	18
NSDE1110SL	18
NSDE1110SML	18
NSDE1110SM	18
NSDE1110SMH	18
NSDE1110SH	18
NSDE1360SL	18
NSDE1360SML	18
NSDE1360SM	18
NSDE1360SMH	18
NSDE1360SH	18

Damper (8x18)

Compression Damper

Part Number	Page
NSDC1085ML	19
NSDC1085MML	19
NSDC1085MM	19
NSDC1085MMH	19
NSDC1085MH	19
NSDC1310ML	19
NSDC1310MML	19
NSDC1310MM	19
NSDC1310MMH	19
NSDC1310MH	19
NSDC1560ML	19
NSDC1560MML	19
NSDC1560MM	19
NSDC1560MMH	19
NSDC1560MH	19
NSDC1825ML	19
NSDC1825MML	19
NSDC1825MM	19
NSDC1825MMH	19
NSDC1825MH	19

Extension Damper

Part Number	Page
NSDE1085ML	19
NSDE1085MML	19
NSDE1085MM	19
NSDE1085MMH	19
NSDE1085MH	19
NSDE1310ML	19
NSDE1310MML	19
NSDE1310MM	19
NSDE1310MMH	19
NSDE1310MH	19
NSDE1560ML	19
NSDE1560MML	19
NSDE1560MM	19
NSDE1560MMH	19
NSDE1560MH	19
NSDE1825ML	19
NSDE1825MML	19
NSDE1825MM	19
NSDE1825MMH	19
NSDE1825MH	19



## Part Index

### Stainless Steel Gas Spring (6x15)

Part Number	Page
NSSG750S	21
NSSG960S20	21
NSSG1000S20	21
NSSG1200S20	21
NSSG1450S20	21
NSSG1500S20PC1	22
NSSG1719S20PC1	22
NSSG1968S20PC1	22
NSSG2000S20PC1	22

### Stainless Steel Gas Spring (14x28)

Part Number	Page
NSSG2550X	27
NSSG3550X	27
NSSG4921X	27

### Stainless Steel Gas Spring (8x18)

Part Number	Page
NSSG750M	23
NSSG960M	23
NSSG1000M	23
NSSG1200M	23
NSSG1221M	23
NSSG1450M	24
NSSG1527M	24
NSSG1700M	24
NSSG1850M	25
NSSG1963M	25
NSSG2000M	25
NSSG2303M	25

### External Locking Gas Spring (6x15)

Part Number	Page
NSLG750S	29
NSLG960S	29
NSLG1000S	29
NSLG1200S	29
NSLG1500S	29
NSLG1550S	30
NSLG1719S	30
NSLG1968S	30
NSLG2000S	30

### Stainless Steel Gas Spring (10x22)

Part Number	Page
NSSG1825L	26
NSSG2050L	26
NSSG2122L	26
NSSG2550L	26
NSSG2780L	26
NSSG3550L	26

### External Locking Gas Spring (8x18)

Part Number	Page
NSLG750M	31
NSLG960M	31
NSLG1000M	31
NSLG1200M	31
NSLG1221M	31
NSLG1450M	32
NSLG1527M	32
NSLG1700M	32
NSLG1850M	33
NSLG1963M	33
NSLG2000M	33
NSLG2303M	33



## Part Index

### External Locking Gas Spring (10x22)

Part Number	Page
NSLG1825L	34
NSLG2050L	34
NSLG2122L	34
NSLG2550L	34
NSLG2780L	34
NSLG3550L	34

### Tension Gas Spring (8x22)

Part Number	Page
NST1693Q	36
NST2260Q	36
NST2850Q	36

### Tension Gas Spring (10x28)

Part Number	Page
NST1004R	37
NST1201R	37
NST1398R	37
NST1594R	37
NST1792R	38
NST2185R	38
NST2618R	38
NST3012R	38

### Components-End Fittings

Part Number	Page
PC1	40
PCE	40
PC2	40
PC3	40
MT1	40
MT1B	40
MT1SS	40
MT2	40
MT2B	40
MT2SS	40
MT3	40
FB1	40
FB2	40
FB3	40
FB4	40
FB5	40
NSC90	40
NSC100	40
EY1	40

### Components-Ball Studs

Part Number	Page
NBS01-01	41
NBS01-02	41
NBS01-03	41
NBS01-04	41
NBS01-01SS	41
NBS02-01	41
NBS02-02	41
NBS02-03	41
NBS02-04	41
NBS02-01SS	41

### Components-Brackets

Part Number	Page
NBF01-01	42
NBF01-01B	42
NBF01-01SS	42
NBF01-02	42
NBF01-02B	42
NBF01-02SS	42
NBR01-02	42
NBR01-02B	42
NBR01-02SS	42
NBR01-02R	42
NBR01-02RB	43
NBR02-01	43
NBR02-01B	43
NBR02-01SS	43
NBR02-01R	43
NBR02-01RB	43
NBR02-02	43
NBR02-02B	43
NBR02-02SS	43
NBR02-02R	43
NBR02-02RB	44
NBR03-01	44
NBR03-01B	44
NBR03-01SS	44
NBR03-02	44



# TERMS & CONDITIONS

## MINIMUM ORDER

It has been Normont's policy that all orders and customers are important to us. Therefore there is no minimum order requirement. For orders below \$50.00, there is a \$10.00 handling fee.

## TERMS

Net 30 days upon credit approval. We accept Visa and MasterCard.

## FREIGHT

Unless otherwise specified, Normont will ship prepaid and charge from our distribution centers.

## PROTOTYPES

There will be no charge for standard product prototypes when our engineers have been involved in the design process. Non-standard or custom prototypes will be reviewed on an individual basis.

## RETURNED GOODS

A written authorization (RMA) is required before returning goods. This will ensure that the appropriate credit documents are issued. All requests for returns should be in writing and should indicate the reason for the return.

## CANCELLATIONS

Customer will assume all responsibility and make payment for all work in progress and completed inventory at the time of notification of cancellation.

## SPECIFICATIONS

Normont reserves the right to revise the specifications for products in this catalogue, without prior notice.

## NON STANDARD PRODUCTS

Normont can supply a wide range of custom products not shown in this handbook – we can supply a multitude of colors, configurations etc. and have drawings and/or models ready in a matter of days for customer approval.

## WARRANTIES

Normont shall warrant that all of the products are manufactured to its drawings and specifications in effect at the time of sale. Normont shall not warrant the merchantability of its products, nor shall Normont warrant the fitness or performance of its products for any particular purposes.

**NORMONT PRODUCTS ARE ROHS COMPLIANT.**

## CONTACT INFORMATION

Inside of North America

Telephone: 1.888.445.8580

E-mail: info@normont.com

Global-Excluding Asia

Telephone: 514.344.4912

E-mail: info@normont.com

Asia

Telephone: 0086.181.3696.8116

E-mail: sales@normont.com



## ABOUT NORMONT

Normont has proudly grown into a leading manufacturer of industrial, automotive, and aerospace gas springs & hydraulic dampers. Our World Class team of Professional Engineers will analyze the specific requirements of each new request whether it be for a customized gas spring, damper, or tension gas spring and develop an innovative quality and cost effective product for that specific application.

[www.normont.com](http://www.normont.com)



**NORMONT**